




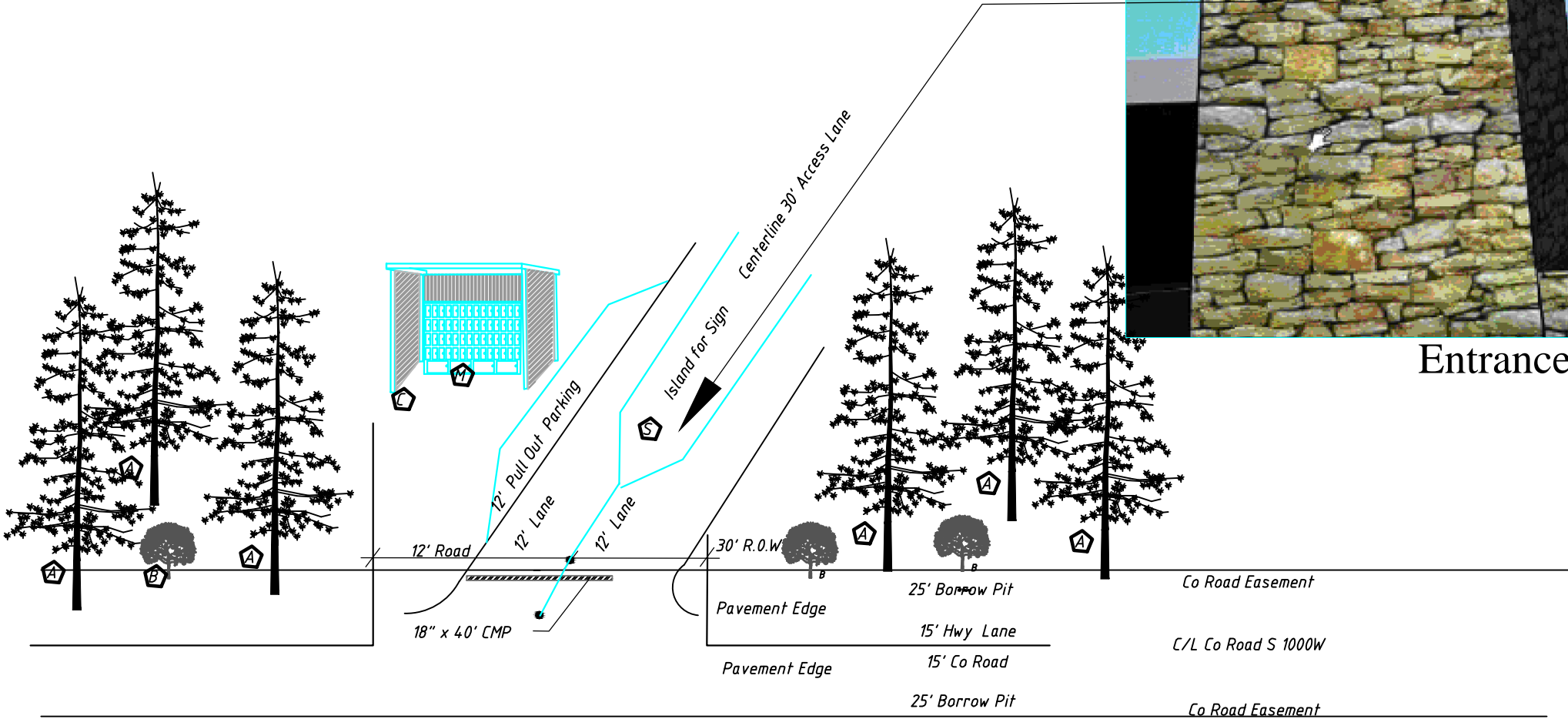


Landscape & Entrance Sign

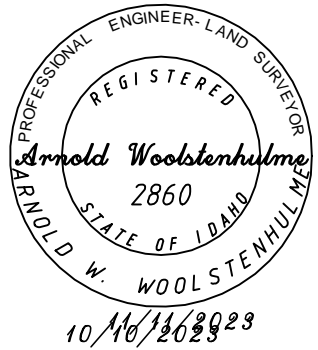
- ### Landscaping & Mail Box Notes
-  - 6 Evergreen Trees min 6" Tall
 -  - 4 Shrub bushes Dwarf Juniper or equal 5 gal size
 -  - Mail Box Shelter 8' x 12' or equal
 -  - 60 Gang Mail Boxes or Equal
 -  - Entrance Sign (See insert)



Entrance Sign



Access / Entrance Plan

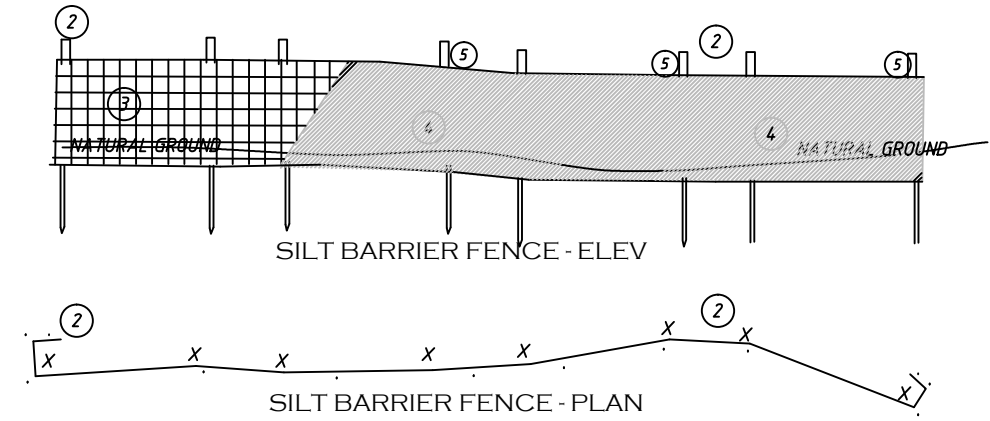
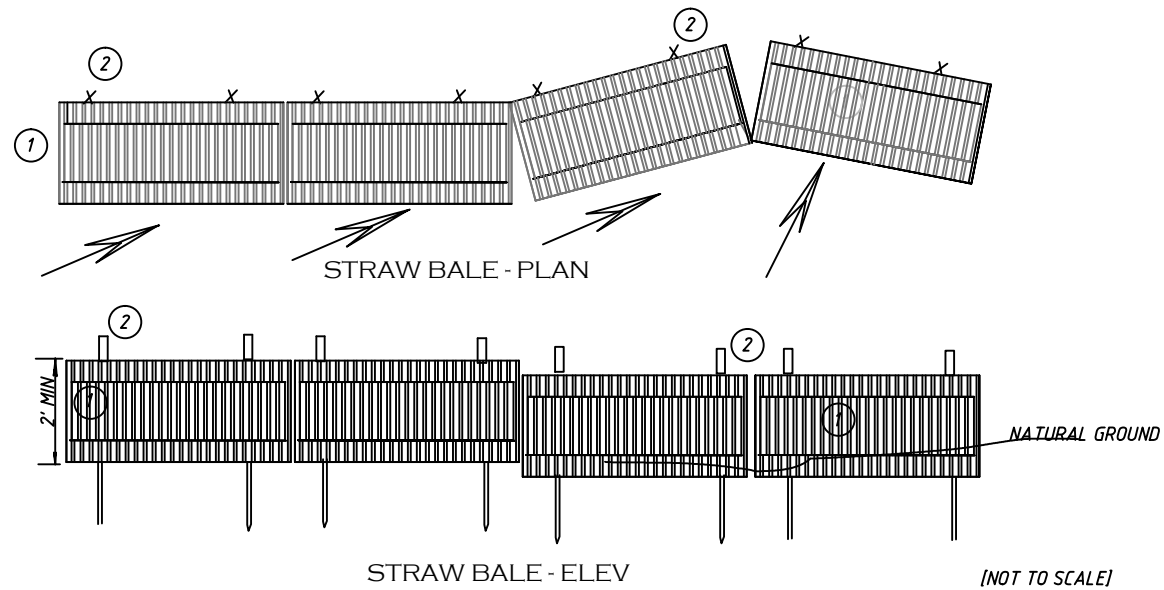


-ENTRANCE LANDSCAPE / SIGN PLAN-

AW ENGINEERING
 255 SOUTH MAIN P.O. BOX 139, VICTOR, IDAHO 83455
 (208) 787-2952 aweng@ida.net

ALPENGLÖ Subdivision
 Landscape Entrance Plan

REV: ANW 11/11/2023	Page 9 of 16 Infr P -2
SURVEY: CC 4-12-21 PROJ: 2020-001.TXT	DWG: AWV 9/01/2022 Landscape - Mail Box PROJ # 21-014



LEGEND	
①	STRAW BALES - STRINGS TO SIDES BURY 6"
②	TEMPORARY WOOD STAKE OR METAL FENCE POST
③	WIRE FENCE 6" GRID MIN 16 GAGE
④	SILT FENCE FILTER FABRIC
⑤	WIRE TOP FILTER FABRIC TO POST

NOTES	
A-	PLACE EROSION CONTROL BARRIERS ALONG THE SLOPES AT AREAS WHERE EROSION MAY OCCUR OR AS SHOWN ON THE PLANS
B-	EROSION CONTROL FENCES TO ALLOW RUNOFF TO PASS THROUGH.
C-	THE NEED OF EROSION CONTROL DEVICES TO BE BY DESIGN AND OR BY CONSTRUCTION METHODS AND SEASON OF YEAR.

THE FOLLOWING BMP'S WILL BE UTILIZED ON THIS PROJECT IN THE AREAS AND AS SHOWN ON SHEET 2 AND ITEMIZED BELOW TO HELP PREVENT EROSION AND POLLUTION ONTO NEIGHBORING PROPERTIES AND THE ENVIRONMENT.

BMP # 25 SILT FENCING

A STANDARD 2 FEET HIGH SILT FENCE WILL BE ESTABLISHED ALONG THE SOUTHWEST AND WEST PROPERTY LINES. A SILT FENCE WILL BE RAN AROUND THE SOUTH AND WEST SIDES ON THE POND EXCAVATION AND EARTHWORK.

THIS FENCE WILL BE INSTALLED AND MAINTAINED FOR ONE YEAR AFTER CONSTRUCTION PERIMETER OF THE PIPE. WORK IS DONE.

BMP # 21 INLET PROTECTION

PIPE INLETS WILL BE PROTECTED WITH A FIBER BUNDLE AROUND THE INLET PLACE FIBER BUNDLE FOR 10 FEET AROUND INLET.

BMP # 22 OUTLET PROTECTION

PIPE OUTLET AREAS WILL BE PROTECTED FROM EROSION WITH 1 Cu Yd OF ROCK RIP RAP PLACE AROUND THE PIPE OUTLET.

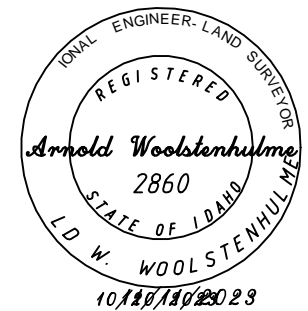
BMP # 6 DUST CONTROL DURING CONSTRUCTION

WHEN THE SITE IS DRY AND HAS POTENTIAL FOR DUST FROM SITE DISTURBANCES AND OR CONSTRUCTION WORK, THE FOLLOWING DUST CONTROL MEASURES WILL BE TAKEN DURING CONSTRUCTION WORK:

- 1 - STAGING OF WORK AND LIMITING EXPOSED SOIL AREAS AND WHEN POSSIBLE MAINTAIN, VEGETATIVE GROUND COVER, RESEED OR STABILIZE EXPOSED TOPSOIL AREAS.
- 2 - SPRINKLE DISTURBED AREAS WITH WATER ON TEMPORARY ROAD AREAS WHERE TRUCKS ARE CROSSING SOIL AREAS..
- 3 - WHEN TRUCKS ARE TRAVELING ONTO THE STATE HIGHWAY THEY WILL HAVE TO CROSS A SEDIMENT TRAP LIKE A CATTLE GUARD TO REMOVE DIRT AND ROCS FROM TIRES.
- 4- ANY DIRT, DUST OR GRAVEL SPLILLED ONTO THE STATE HIGHWAY WILL BE REMOVED BY EQUIPMENT AND A POWER BROOM.

BMP # 9 VEHICLE / EQUIPMENT MAINTENANCE

A DESIGNATED VEHICLE STORAGE AND MAINTENANCE YARD WILL BE CREATED. THE AREA MAY BE REQUIRED TO BE GRADED AND BERMED. ANY WASTE WATER WILL BE COLLECTED INTO A POND. POLLUTANTS SUCH AS OIL, GREASE, FUELS, ETC. WILL BE COLLECTED IN A LINED POND.

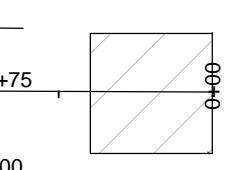
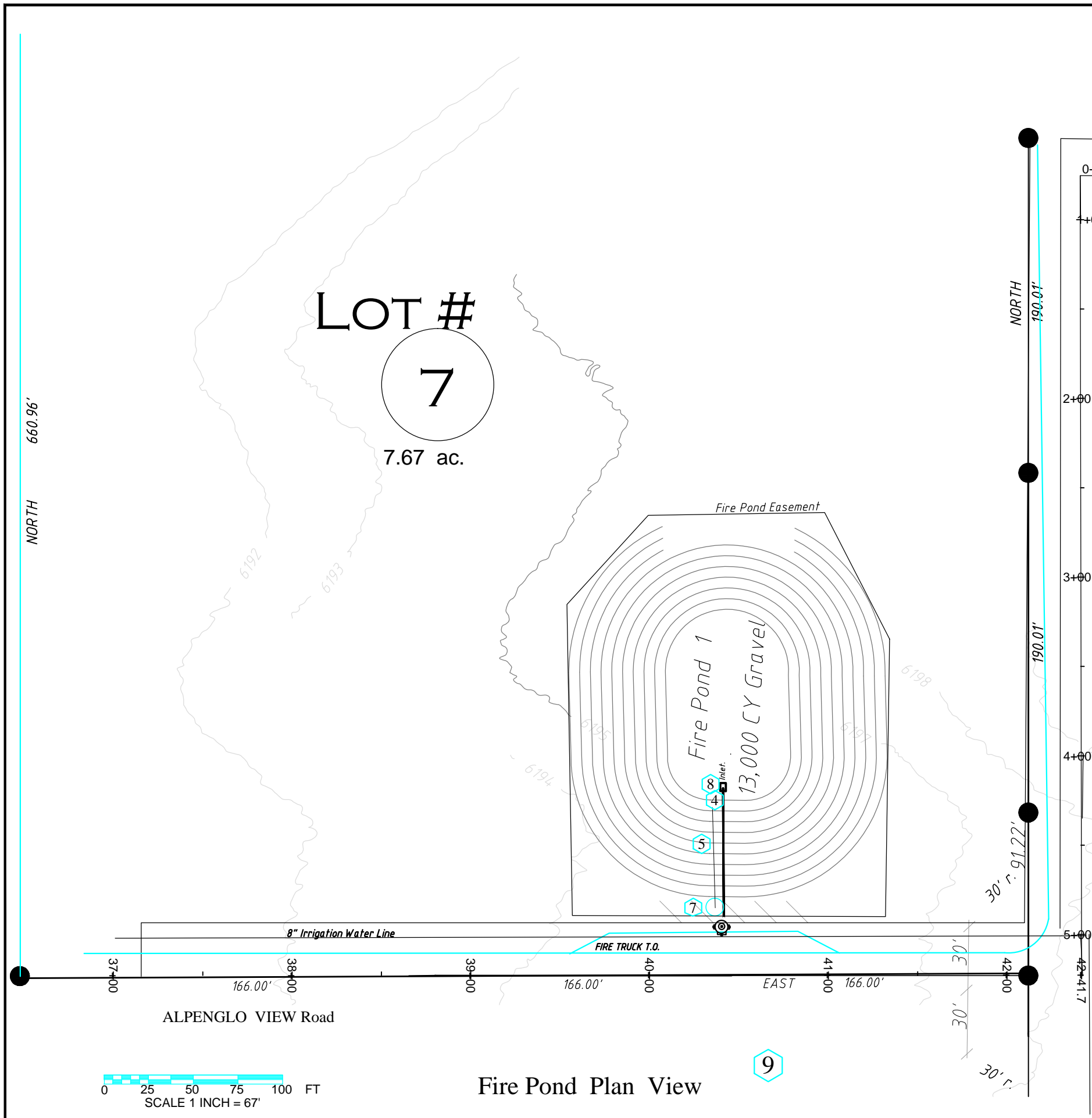


EROSION CONTROL PLANS

ALPENGLO Subdivision
Infrastructure Drawings

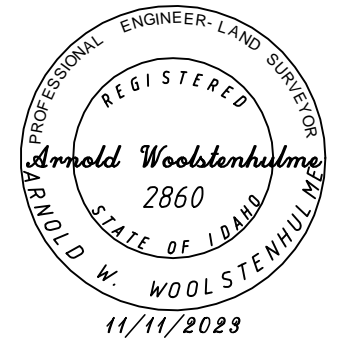


REV: AWW 11/11/2023	Infrastructure Page 10 of 16 [Inf F-2]
SURVEY: CC 4-12-21	DWG: AWW
PROJ: 2020-001.TXT	1/10/2022
	PROJ # 21-014



Fire Pond Notes

- 1- Surface area of fire pond = 32,000 sq ft
- 2- Pond excavation = 13,000 Cu Yds
- 3- Pond liner = 20,000 sf
- 4- 10" PVC inlet pipe to fire hydrant
- 5- 4" PVC fill line - Teton Pipeline Irrigation Co water line
- 6- 1.5" PVC fill line from residential well - off season filling.
- 7- Auto charge manhole system (See page Fire 3.)
- 8- Inlet screen 18" x 12' long

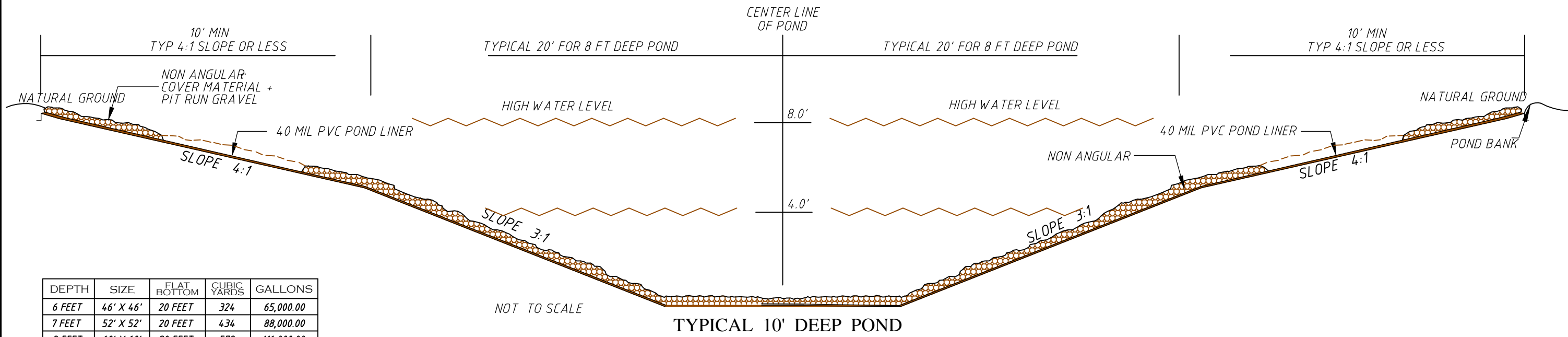


Fire Pond Plan View

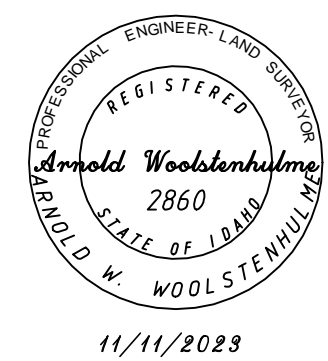
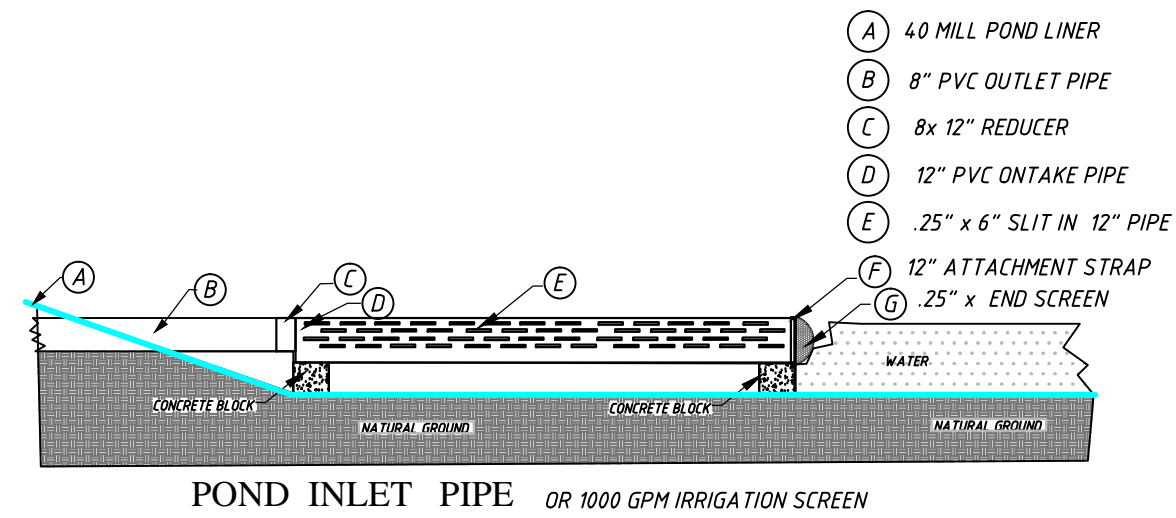
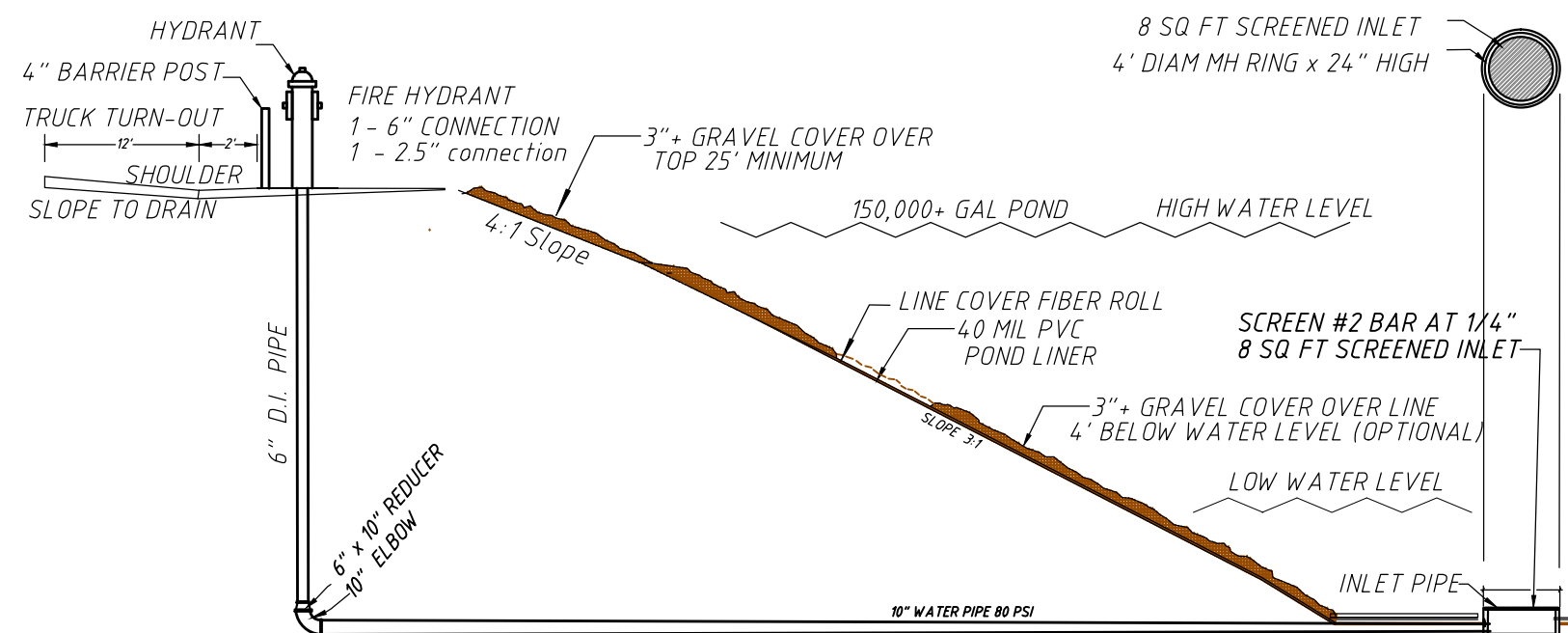
Fire Pond Plan View

<p>255 SOUTH MAIN P.O. BOX 139, VICTOR, IDAHO 83455 (208) 787-2952 aweng@ida.net</p>	<p>ALPENGLO Subdivision Fire System Drawings</p>	
	<p>REV: AWW 11/11/2023</p>	<p>Fire Pond Page 11 of 16 [F-1]</p>
<p>SURVEY: CC 4-12-21 PROJ: 2020-001.TXT</p>	<p>DWG: AWW 1/10/2022</p>	<p>PROJ # 21-014</p>

FIRE POND & SYSTEM PLANS



DEPTH	SIZE	FLAT BOTTOM	CUBIC YARDS	GALLONS
6 FEET	46' X 46'	20 FEET	324	65,000.00
7 FEET	52' X 52'	20 FEET	434	88,000.00
8 FEET	60' X 60'	20 FEET	572	116,000.00
9 FEET	65' X 65'	20 FEET	640	130,000.00
10 FEET	140' X 180'	70 FEET	1,220	250,000.00

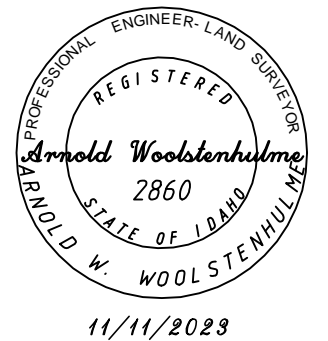
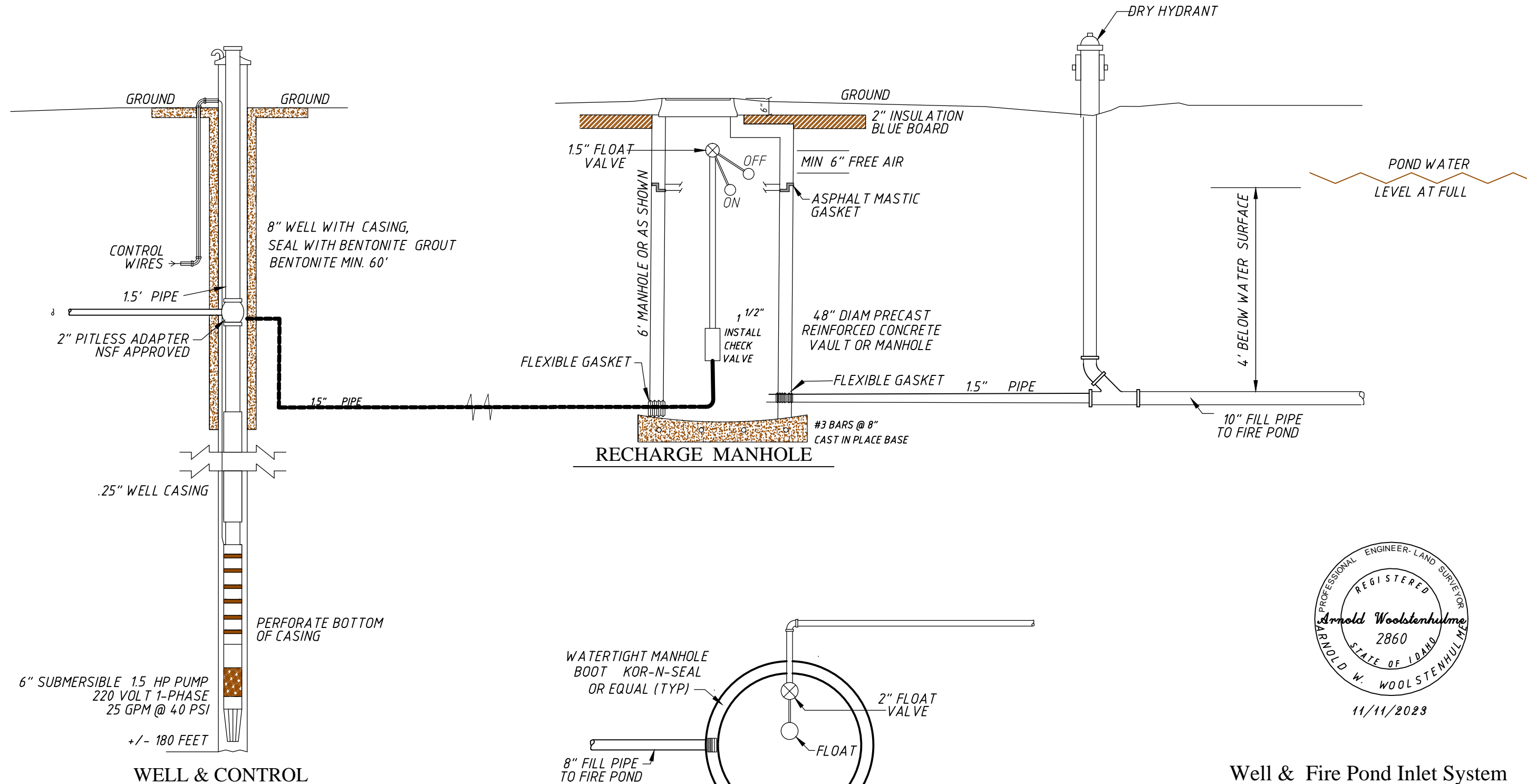


TYPICAL POND CROSS SECTION & INLET

Fire Pond Cross Section
ALPENGLO Subdivision
Fire System Drawings

	255 SOUTH MAIN P.O. BOX 139, VICTOR, IDAHO 83455 (208) 787-2952 aveng@ida.net		REV: AWW 11/11/2023 SURVEY: CC 4-12-21 PROJ: 2020-001.TXT	DWG: AWW 1/10/2022	FIRE POND Page 12 of 16 [F-2] PROJ # 21-014
	Arnold Woolstenhulme REGISTERED PROFESSIONAL ENGINEER - LAND SURVEYOR STATE OF IDAHO 2860				

FIRE POND & SYSTEM PLANS



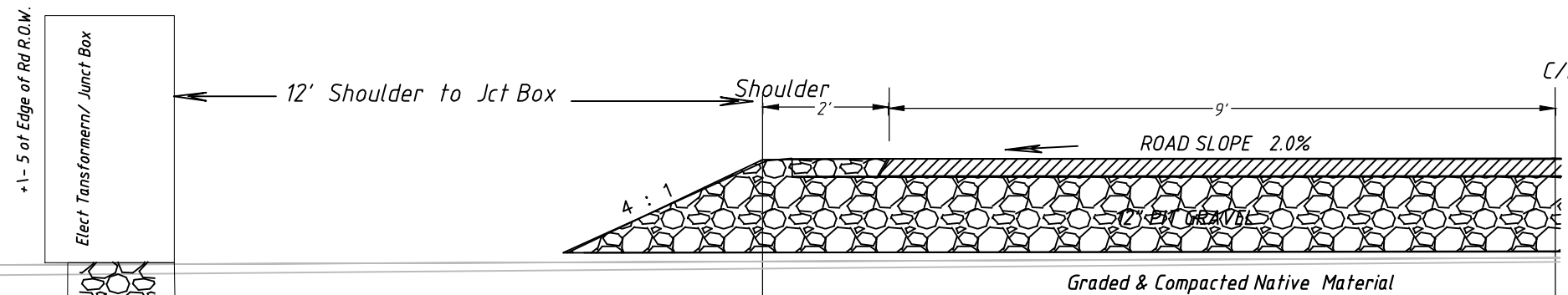
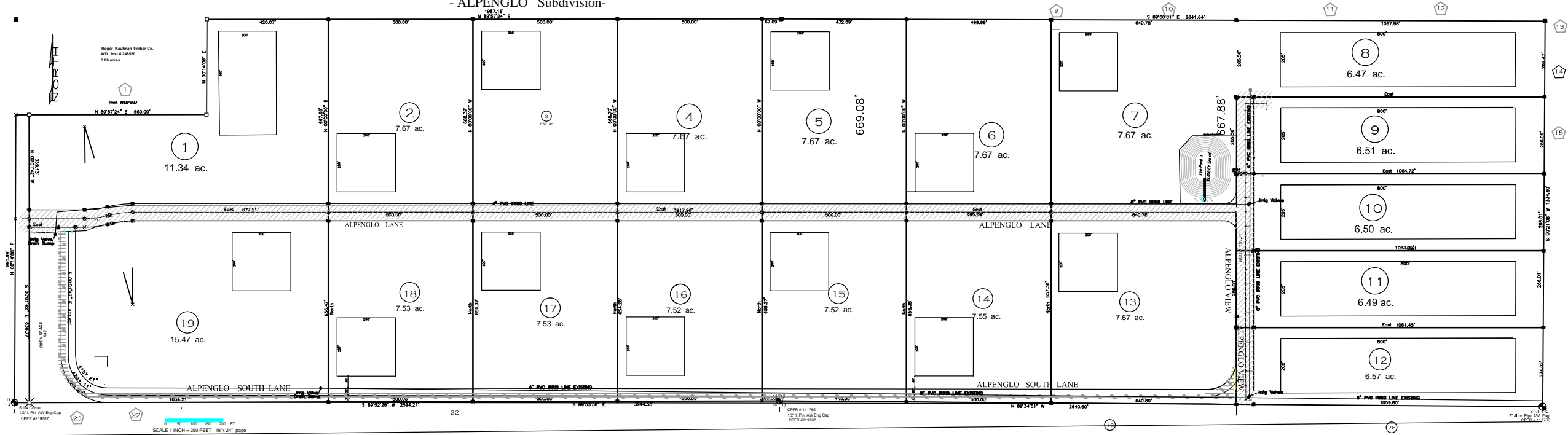
Well & Fire Pond Inlet System

	ALPENGLO Subdivision	
	Fire System Drawings	
255 SOUTH MAIN P.O. BOX 139, VICTOR, IDAHO 83455 (208) 787-2952 aveng@ida.net	REV: AWW 11/11/2023 SURVEY: CC 4-12-21 PROJ: 2020-001.TXT	FIRE POND Page 13 of 16 [F-3] DWG: AWW 1/10/2022 PROJ # 21-014

IRRIGATION PLANS

S 1/2 SE 1/4 Sec. 11, & S1/2 SW 1/4, Sec 12, T5N., R 45E., B.M., Teton Co. Id.

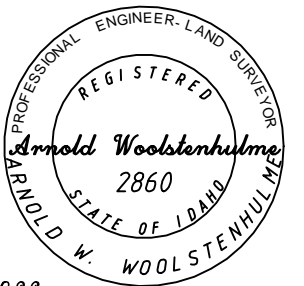
- ALPENGLO Subdivision-



LOCAL 22' ROADS, Teton Co. Id.

PROJECT QUANTITIES

NO.	ITEM	UNIT	AMOUNT	QUANTITY
1	TRENCH EXCAVATION - 36" Deep x LENGTH	LIN FT	LIN FT	5600
2	6" PVC IRRIG PIPE 200 PSI RATED	LIN FT	2600	2600
3	4" PVC IRRIG PIPE 200 PSI RATED	LIN FT	2000	2000
4	4" RISERS WITH VALVE CAP	EACH	120	120
5	GATE IRRIGATION GATE VALVES	EACH	4	4
10	ELECTRIC POWER LINE BURIED 36" DEPTH	LIN FT	10200	10200L.F.
11	2" CONDUIT FOR TELEPHONE SERVICE	LIN FT	4200	4200
12	ELECTRIC POWER JUNCTION BOX	EACH	4	4
13	ELECTRIC POWER TRANSFORMER BOX	EACH	15	15
14	TIE ELEC POWER INTO FREC POWER LINE	EACH	1 SUM	1 SUM



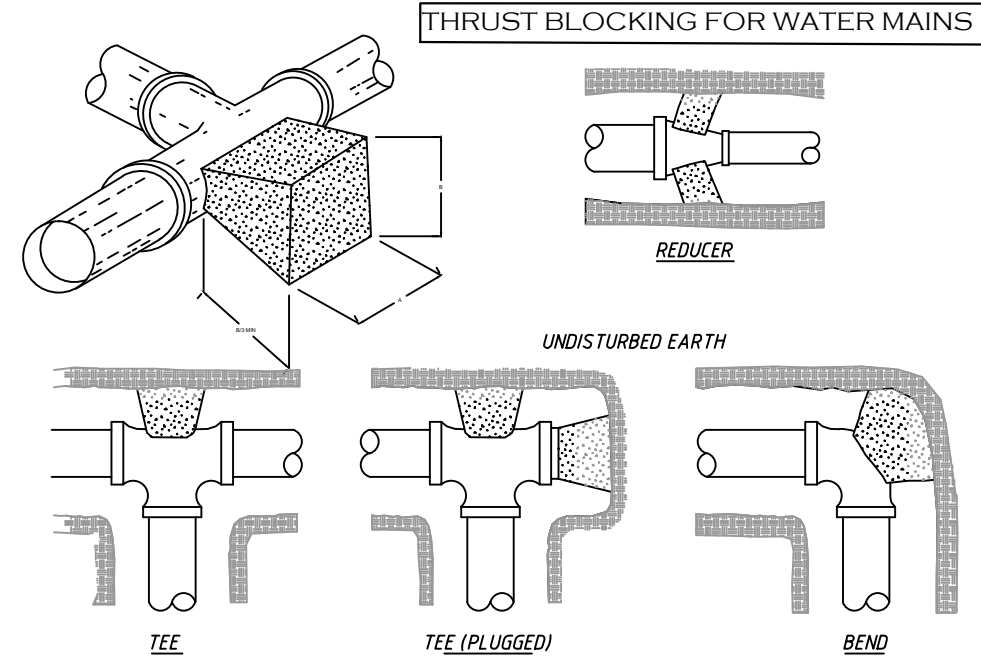
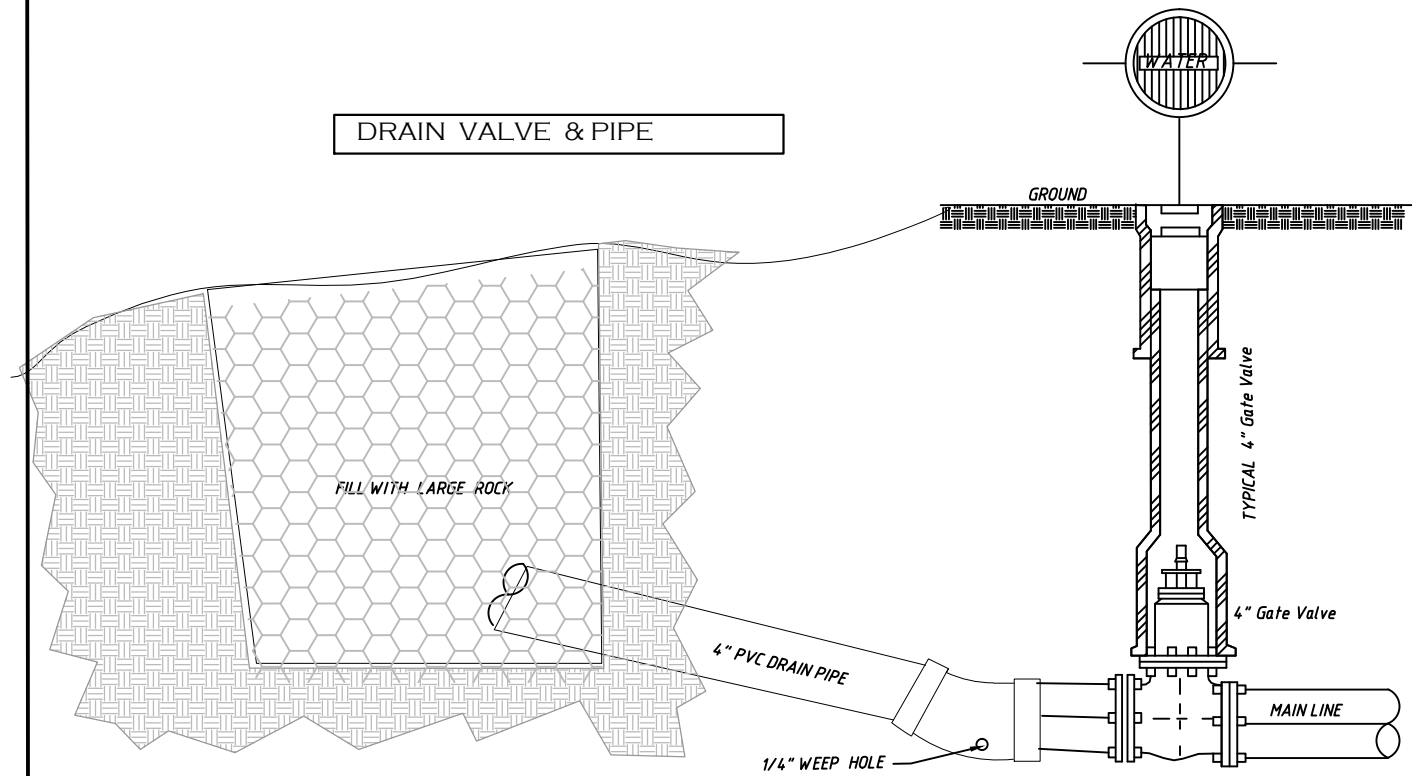
11/11/2023



ALPENGLO Subdivision IRRIGATION SYSTEM Plans

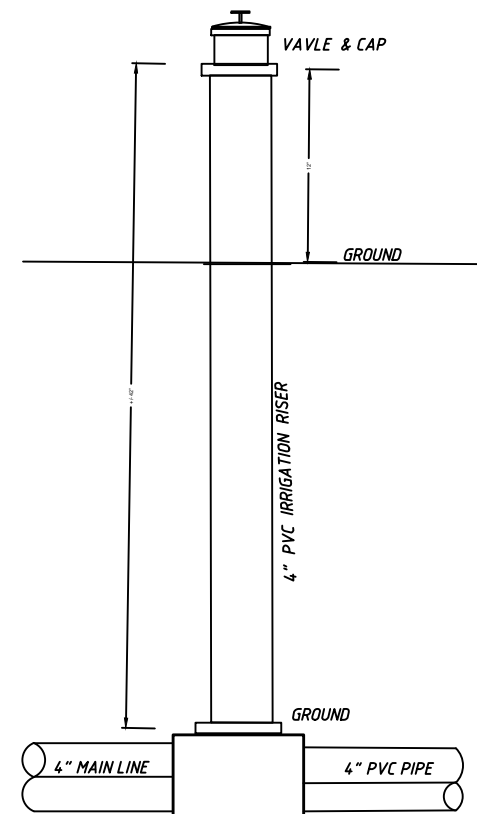
REV: ANW 11/11/2023 Page 14 of 16 [U-1]
 SURVEY: CC 4-R-21 DWG: ANW
 PROJ: 2020-001TX7 5/11/2022 Landscape - Mail Box.dwg PROJ # 21-014

IRRIGATION SYSTEM DETAILS

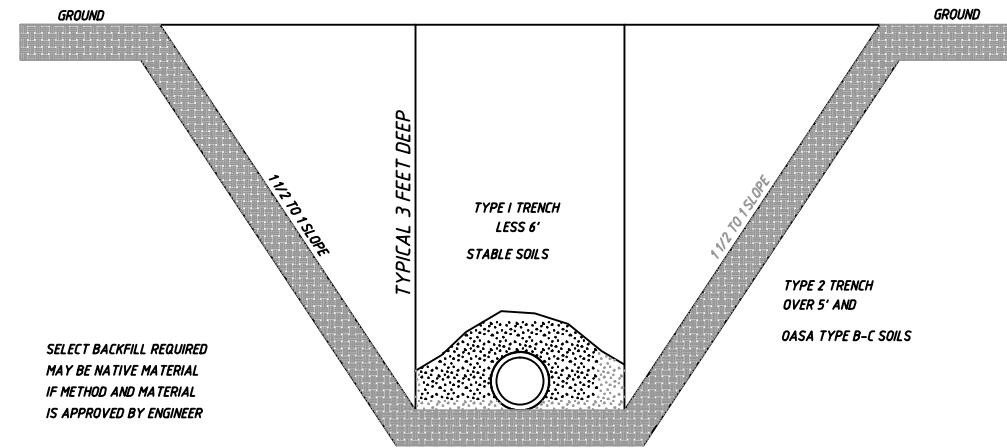


FITTING SIZES	DIMENSION FOR THRUST BLOCKING					
	TEES AND PLUGS		90° BEND		45° BEND AND WYES	
	A	B	A	B	A	B
4"	1' - 7"	1' - 2"	1' - 9"	1' - 6"	1' - 8"	0' - 10"
6"	2' - 0"	1' - 11"	2' - 5"	2' - 2"	1' - 10"	1' - 7"
8"	2' - 8"	2' - 6"	3' - 2"	3' - 0"	2' - 5"	2' - 1"
10"	3' - 4"	3' - 3"	4' - 0"	3' - 10"	3' - 0"	2' - 9"

NOTE: THIS TABLE IS BASED ON 150 PSI MAIN PRESSURE 2000 PSF SOIL BEARING PRESSURE.
WRAP ALL FITTINGS WITH POLYETHYLENE

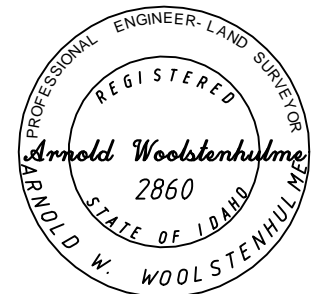


4" IRRIGATION RISER & VALVE



TRENCH DETAIL

SELECT BACKFILL REQUIRED
MAY BE NATIVE MATERIAL
IF METHOD AND MATERIAL
IS APPROVED BY ENGINEER



11/11/2023

IRRIGATION PLANS

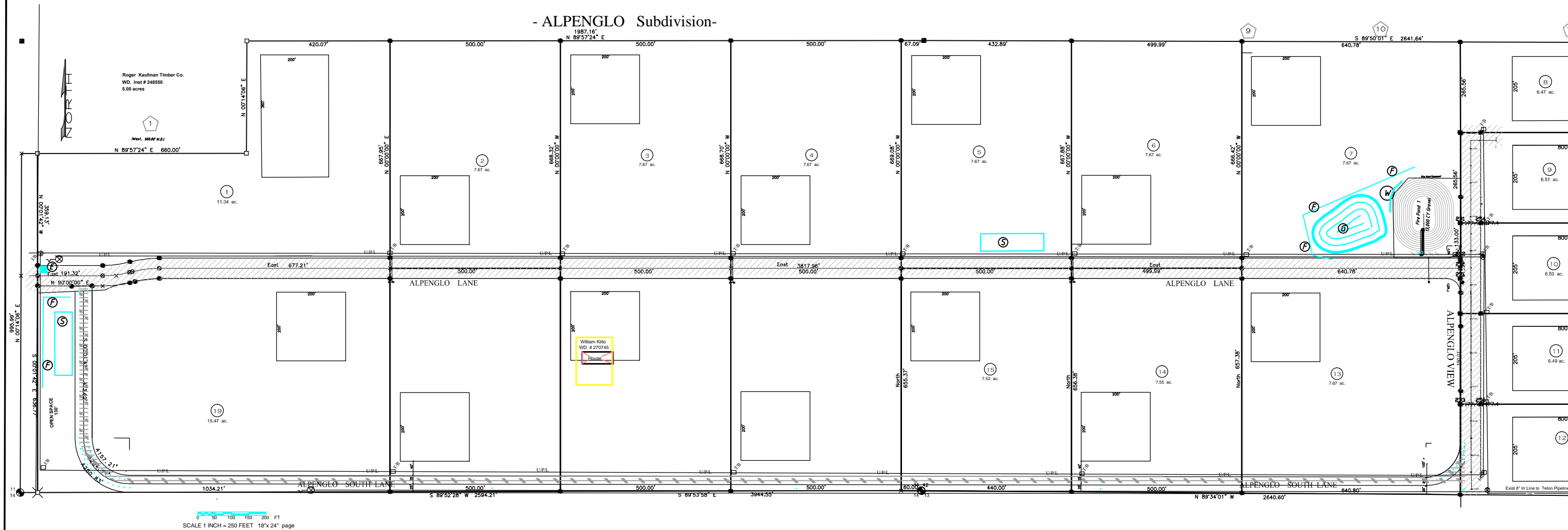
ALPENGLO Subdivision
Irrigation System Plans



ELECTRICAL & UTILITY PLANS

S 1/2 SE 1/4 Sec, 11, & S1/2 SW 1/4, Sec 12, T5N., R 45E., B.M., Teton Co. Id.

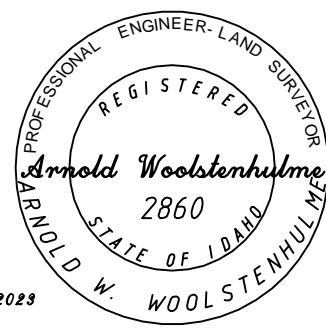
- ALPENGLO Subdivision-



SCALE 1 INCH = 250 FEET 18"x 24" page

LEGEND

	SECTION CORNER FOUND OR SET AS NOTED		LOT BOUNDARY
	FOUND 1/16 CORNER - 5/8" IRON PIN WITH CAP INSCRIBED: AW ENG 2860		ROAD CENTERLINE
	SET 5/8" IRON PIN AW ENG CAP 2860		FENCE LINE
	Irrig Gate Valve, size of trunkline		Existing IRRIGATION LINE WITH RISERS @ 40'
	Irrig 4" Gate Valve, & Sump drain		New IRRIGATION LINE WITH RISERS @ 40'
	EASEMENT - WIDTH AS NOTED Typical Rd & Utility -35' each side		Elec Under Ground Power line
			Elec Transformer Box
			Elec Unciton Box



11/11/2023

AW ENGINEERING
 255 SOUTH MAIN P.O. BOX 139, VICTOR, IDAHO 83455
 (208) 787-2952 aweng@ida.net

ALPENGLO Subdivision Utilities Plan

REV: <i>AW 10/1/2023</i>	Page 16 of 16 [U-3]
SURVEY: CC 4-12-21 PROJ: 2023-01.TXT	DWG: AWW 9/9/2023
Utilities.dwg	PROJ # 21-014