



y2consultants.com
307 733 2999

CONSULTANTS

ENGINEERING, SURVEYING & PLANNING
LANDSCAPE ARCHITECTURE, GIS
NATURAL RESOURCE SERVICES



IRISH ACRES SUB-DIVISION 2022 AQUATIC RESOURCE INVENTORY

AUGUST 5, 2022

Prepared by:

Y2 Consultants, LLC
PO Box 2870
180 S. Willow St.
Jackson, WY 83001

Prepared for:

Cloud Veil LLC
PO Box 1116
Wilson, WY 83014

- This Page Intentionally Left Blank -

Contents

EXECUTIVE SUMMARY	1
WETLANDS	1
DEFINITION OF A WETLAND & WETLAND PROTECTION	1
WETLAND PROTECTION.....	1
DETERMINATION AND DELINEATION.....	2
WETLAND VEGETATION & INDICATORS.....	2
WETLAND SOILS & INDICATORS.....	2
WETLAND HYDROLOGY & INDICATORS	2
IRISH ACRES STUDY AREA.....	3
LOCATION AND PHYSIOGRAPHY	3
LAND USE	3
SURFACE HYDROLOGY.....	3
STUDY AREA SOILS.....	3
STUDY AREA VEGETATION COVERTYPES.....	4
CLIMATE	4
PRIOR DELINEATIONS	4
WETLAND DELINEATION.....	4
METHODS	4
RESULTS	5
DESCRIPTIONS OF STUDY AREA AQUATIC RESOURCES	7
SUMMARY AND CONCLUSIONS.....	8
REGULATORY REQUIREMENTS	8
WORKS CITED	9
APPENDIX A – FIGURES.....	10
APPENDIX B – SAMPLE PLOT PHOTOS.....	16
SAMPLE POINT 01	16
SAMPLE POINT 02.....	18
SAMPLE POINT 03.....	20
APPENDIX C – DATA FORMS	22

EXECUTIVE SUMMARY

A routine Aquatic Resource Inventory (ARI) was conducted on Irish Acres Subdivision in Teton County, Idaho on May 31, 2022 (Appendix A – Figure 1). The study area consisted of the 40-acre parcel, with additional focus on the areas where irrigation influences cross through the property along lower topography. The inventory and delineation were conducted on the approximately 40-acre area by wetland scientist staff for Y2 Consultants, Danielle Goodman, at the request of the new property owners (the “Client”).

The purpose of the study was to determine if any wetlands, as per wetland definitions in the 1987 U.S. Army Corps of Engineers (USACE) Wetlands Delineation Manual (Environmental Laboratory, 1987), occurred within the study area; and if present, to determine the locations and boundaries of all wetlands within the study area.

The ARI provides the USACE the necessary information to make a final determination of wetland presence, boundaries, and jurisdiction as per their responsibility under Section 404 of the Federal Clean Water Act.

WETLANDS

DEFINITION OF A WETLAND & WETLAND PROTECTION

Wetlands, according to the USACE under the Clean Water Act, are defined as areas that are inundated or saturated by surface or ground water at a frequency and duration sufficient to support and that under normal circumstances do support, a prevalence of vegetation typically adapted for life in saturated soil conditions (Environmental Laboratory, 1987).

Topographically, wetlands are transitional areas between well-drained uplands and permanently or periodically flooded aquatic habitats. Wetlands serve important ecosystem functions. Such ecological functions include food chain production, unique habitat, nesting and spawning sites, and rearing and resting landscapes for aquatic and land species. They also provide function through protection of adjacent areas from erosion, storage for storm and flood waters, natural recharge where ground and surface water are interconnected, and natural water filtration and purification functions.

WETLAND PROTECTION

Given that wetlands provide beneficial services considered valuable—as a result of their inherent and unique ecological characteristics—and because of the tremendous threats to existing wetland resources, the federal government included wetland protections when it enacted the Clean Water Act in 1972. The Act, specifically Section 404, grants protection to “Waters of the United States, including wetlands” and prohibits activities that convert wetlands to upland or open water environments. This protection is given to aquatic habitats that meet the definitional criteria of a wetland and are determined to be ‘jurisdictional’ by the USACE. Depending on the purpose of a project and characteristics of a specific wetland, some impacts may be allowed, but only after project evaluation and permit issuance by the USACE and other local agencies.

Other federal agencies are also involved in regulations associated with Section 404 of the Clean Water Act. The U.S. Fish and Wildlife Service (USFWS) reviews wetland permit applications to evaluate any potential impacts a

project may have on species listed as threatened or endangered under the Endangered Species Act. The U.S. Environmental Protection Agency (EPA) also reviews all permit applications submitted to the USACE and holds the legal authority to enforce wetland regulations.

Teton County, Idaho has further enacted wetland protection measures. The Teton County Title 8 Zoning Regulations require development occur within 'upland' areas, where able, when "jurisdictional" wetlands are present (Teton County ID, 2009).

DETERMINATION AND DELINEATION

Site-specific wetland identification and delineation requires the evaluation of three wetland parameters: vegetation, soils, and hydrology. All three parameters must meet the specific definitional criteria described in the USACE Wetland Delineation Manual (Environmental Laboratory, 1987).

WETLAND VEGETATION & INDICATORS

To meet wetland vegetation criteria, an area must be dominated by plants adapted for survival in saturated soil conditions (i.e., hydrophytes). All plants known to occur in or near wetlands have been assigned a wetland indicator status. This status generally reflects the frequency at which a particular species occurs in a wetland as outlined below:

<u>Wetland indicator status</u>	<u>Frequency of occurrence in a wetland</u>
Upland (UPL)	< 1%
Facultative-upland (FACU)	1%-33%
Facultative (FAC)	33%-67%
Facultative-wetland (FACW)	67%-99%
Obligate wetland (OBL)	99%-100%

WETLAND SOILS & INDICATORS

A wetland or hydric soil is a soil that formed under conditions of saturation, flooding, or ponding long enough during the growing season to develop anaerobic conditions in the upper horizons. Hydric soil characteristics develop over long periods of time. Indicators of hydric soils include such characteristics as a dull blue-gray color (gleyed) and/or reddish-brown speckles or nodules (ferrous iron concentrations). To meet definitional criteria, these hydric soil indicators must be at or near the soil surface (Environmental Laboratory, 1987).

WETLAND HYDROLOGY & INDICATORS

Wetland hydrology refers to the presence of water at or above the soil surface for a sufficient period of the year to significantly influence the plant types and soils that occur in the area. An area is required to be inundated or saturated to the surface for at least 5% of the growing season in most years (Environmental Laboratory, 1987). Both running water (lotic) and standing water (lentic) as well as ground water, surface water, and intermittent water can support wetlands. Lotic wetlands are associated with creek, stream, and river channels and floodplains, while lentic wetlands are associated with lakes, vernal pools, ponds, seeps, marshes, and bogs.

Although both definitional and jurisdictional wetlands meet specific vegetative, soil, and hydrologic criteria, the latter are wetlands determined by USACE personnel as subject to the regulations inherent in Section 404 of the Clean Water Act. Determination of a definitional wetland is a technical process, while determination of a

jurisdictional wetland is a decision based on an examination of the driving forces, current conditions, and relationship of a definitional wetland in relation to its surroundings.

IRISH ACRES STUDY AREA

LOCATION AND PHYSIOGRAPHY

The ARI inventory consisted of a 40-acre area of the property, owned by Cloud Veil LLC. The study area focused on the eastern portion of the property intended to be developed. The study area included the depressional areas along the southwest portions of the property that collect and hold irrigation water and the associated uplands.

The property is located approximately 4.5 miles north of Driggs, Idaho. Current access to the property is gained by driving north on Highway 33 approximately 4 miles, then west onto W 4000 N for about 0.5 miles. The site is located south of W 4000 N in a portion of Section 10, T5N, R45E, Teton County, Idaho.

The study property has an approximate average elevation of 6,100 ft. and is characterized by relatively flat to rolling terrain formed during the deposition of gravel throughout the Teton Valley approximately 60-80 million years ago by major ancestral watercourses coming from the Teton River. Melting glaciers and the accompanying scouring effects of runoff leveled the valley and deposited silt, clay, and loams throughout the region. The surface aspect of the property is nearly flat with slight undulation in topography.

LAND USE

The study area is currently undeveloped. The area is slated to be developed into a residential subdivision.

SURFACE HYDROLOGY

The property is located in the Hydrologic Unit Code (HUC) 170402 – Upper Snake River Basin. The subject property does not contain surface water. Some surface water may accumulate as overland flooding during the irrigation season, generally from late May or early June to late August. Though no irrigation ditches are present on the property, water is fed onto the property from irrigation ditches on the bordering properties to the east. Irrigation water also flows along the road ditch on the western boundary of the property. This is where water accumulates along the lower areas on the western side of the parcel (Appendix A – Figure 2 and Appendix A – Figure 3).

The subject property does not contain other natural springs or wetlands. Drainage off the property is through the low areas and drainage ways present. The study area is not located within any of the FEMA Flood Zones.

STUDY AREA SOILS

The dominant soil type for this property is the Redfish-Foxcreek complex, 0 to 2 percent slopes (Appendix A – Figure 4). This is the dominant soil type within the wetland study area. This soil type is characterized with slopes of 0 to 3 percent, poorly drained, and have an average depth to the water table of 10 inches. Other soils present on site are the Alpine- St. Anthony and the Feltonia-Arimo complexes. Soil characteristics for each sample plot can be found in the data sheets in Appendix C.

STUDY AREA VEGETATION COVERTYPES

The majority of the upland communities within the study area are dominated by smooth brome (*Bromus inermis*), Kentucky bluegrass (*Poa pratensis*), and thread leaf sedge (*Carex filifolia*) with assorted upland forbs in the understory.

Dominant plant species on the more hydric sites includes Nebraska sedge (*Carex nebrascensis*) and meadow foxtail (*Alopecurus pratensis*). There are no trees or shrubs present on the site.

CLIMATE

The 'growing season' for Driggs (NCDC DRIGGS Station 102676-0) according to the United States Department of Agriculture (USDA) WETS table is approximately 100 days. Average high temperature annually is 54°F and the average low is 26°F, and average precipitation is 16 inches.

PRIOR DELINEATIONS

There are no known prior wetland delineations on the study area.

WETLAND DELINEATION

METHODS

This ARI was completed according to a USACE Wyoming Regulatory Office Aquatic Resources Inventory Guidance memo dated May 10, 2011. The ARI included a routine wetland delineation using the 1987 USACE Wetland Delineation Manual and the Western Mountains, Valleys and Coast Regional Supplement.

Preliminary data for the wetland delineation were gathered from several sources prior to the onsite inspection including the USFWS's National Wetlands Inventory (NWI) mapping, the Teton County soil survey (Young, 1982), the Teton County Hydric Soils List (Soil Survey Staff, Natural Resources Conservation Service, United States Department of Agriculture, 2017), the USACE 2016 National Wetland Plant List, version 3.24 (Lichvar, R.W., M. Butterwick, N.C. Melvin, and W.N. Kirchner, 2016) and aerial photography.

Onsite inspections occurred on May 31, 2022. Field data associated with the wetland delineation and boundary mapping were collected from three (3) sample plots distributed to represent the areas that could have potential impacts within the proposed development to the property. Wetland boundaries were mapped using an EOS Arrow 100 submeter GPS. Wetland boundaries have been digitally mapped onto color, 2021, aerial photography using ArcGIS 10.5 and are included herein (Appendix A – Figure 6). The mapped wetland areas were along the southwestern borders of the property following the depressional topography of the property and it appeared that irrigation had a large influence on the wetland areas that were mapped. Though no irrigation ditches are present on the property, water is fed onto the property from irrigation ditches on the bordering properties to the east. Irrigation water also flows along the road ditch on the western boundary of the property. This is where water accumulates and ponds along the lower areas on the western side of the parcel. Photographic documentation of the sample plots on the property were also collected and are presented in Appendix B.

RESULTS

Mostly artificial (i.e. irrigation) conditions have influenced the creation, perpetuation, and development of wetlands within the study area. Existing proximate and adjacent land activities, which consist of livestock grazing and residential development are at least 5 years old and are defined by the 1987 USACE Manual as “normal circumstances”.

The NWI mapping indicated the presence of Freshwater Emergent wetlands habitat within the study area (Appendix A – Figure 5).

Field data collected during this study confirmed the presence of one wetland type within the inventory boundary, Freshwater Emergent. Subsequent delineation analysis and spatial mapping of wetland boundaries revealed that approximately 12.59 -acres (3.2% of the study area) conformed to the definitional criteria for wetlands as per the 1987 USACE Manual and the Regional Supplement. Two (2) sample plots met all three wetland criteria (vegetation, soils, and hydrology) and were determined to be wetlands. One (1) sample point met none of the three criteria and was determined to be upland. Wetland locations, wetland boundaries, and sample plots are depicted in Appendix A – Figure 6.

The field site investigation was performed during the spring season (May), which indicates that ground water and surface water elevations were higher compared to drier times of the year. However, the site is highly irrigation influenced and the irrigation water had not been turned on yet for the season at the time of the visit. The site may expect to see increases in water later in the season as irrigation ditches are turned on throughout the area. The irrigation ditches associated with the Teton River complex provide the hydrology for the site throughout the growing season. Water monitoring well installation was attempted in the summer of 2022 and no water was found when drilling. This is most likely due to the combination of the restrictive layer present in the soil units on site, and the water on site being irrigation fed via overland flow during the irrigation season.

Table 1. Summary of individual sample plots and wetland criteria for Irish Acres study area, Teton County, Idaho.

Sample Point	Hydrophytes	Hydric Soils	Wetland Hydrology	Wetland Determination
SP01	Yes	Yes	Yes	Yes
SP02	No	No	No	No
SP03	Yes	Yes	Yes	Yes

The following describes the vegetation, soils, and hydrology of these aquatic sites and adjacent uplands.

Vegetation – There is one wetland community type present within the study area, freshwater emergent. Herbaceous vegetation within wetland sample plots was Nebraska sedge (*Carex nebrascensis*) and meadow foxtail (*Alopecurus pratensis*). There was no shrub community present.

Soils – The dominant soil type for the property is the Redfish-Foxcreek complex. Soil surveys are a predictive tool and are not an accurate map of occurrence, hence field surveys were conducted at all sample plots. Hydric indicators for soils found that definitional wetlands exhibited a sandy redox (S5) and sandy mucky material (S1). Soil characteristics associated with sample plots are presented on the respective data sheets which can be found in Appendix C.

Hydrology – Study area freshwater emergent wetlands are located in low seep areas along the depression topography across the property. The hydrologic regime of delineated wetlands appears to be seasonally flooded (surface water present for several months during the growing season). The wetland hydrology indicators found in the wetland sample plots are oxidized rhizospheres on living roots (C3), drainage patterns (B10), and FAC-Neutral test (D3). Hydrologic indicators associated with the sample plots are presented on the respective data sheets in Appendix C.

DESCRIPTIONS OF STUDY AREA AQUATIC RESOURCES

For the purposes of this report, aquatic resources in the study area have been lumped into two general groups. The wetland classification within this group is based off the system most commonly used today in the U.S., “The Classification of Wetlands and Deepwater Habitats of the United States” by Cowardin et al., 1979. Within this system, wetlands are classified primarily on geologic and hydrologic considerations, with vegetation life form or substrate type used as a class modifier.

The Palustrine Scrub-Shrub (NWI classification of Freshwater Forested/Shrub) and Palustrine Emergent (NWI classification of Freshwater Emergent) are the wetland types found to be present in the study area, as classified according to the Cowardin et al. (1979) classification system. Palustrine refers to wetlands that are not tidal.

Palustrine Emergent – Emergent wetlands are characterized by erect, rooted, herbaceous hydrophytic plants, excluding mosses and lichens (Cowardin, 1979). According to the standard definition, wetland vegetation must be present for most of the growing season in most years and is usually dominated by perennial plants. Palustrine emergent wetlands may exist in a variety of geomorphic settings and water regimes, both of which strongly influence plant species composition. Palustrine emergent wetlands within the study area make up 12.59-acres. These areas occur in depressional areas that collect surface runoff and have a high-water table. These areas occurred mostly within the ditch areas and along the perimeter boundaries of the reservoirs that were determined to have wetland characteristics (Appendix A – Figure 6).

Palustrine Scrub-Shrub – This class of wetlands is characterized by woody vegetation less than 6 m (20 feet) tall, including true shrubs, young trees, and trees or shrubs that are small or stunted because of environmental conditions (Cowardin, 1979). Palustrine scrub-shrub wetlands most often occur in depressional areas. Palustrine scrub-shrub wetlands within the study area make up 0-acres. It is assumed that both surface flow and groundwater discharge support these areas (Appendix A – Figure 6).

A listing of aquatic features by aquatic resource type and a discussion of specific characteristics of the groupings is provided below.

Table 2. Summary of aquatic resource type, Cowardian classification, acreages and associated notes and sample points, Irish Acres, Teton County, Idaho.

Aquatic Resource Type	Cowardian Classification	Associated Sample Points	Notes	Acres
Palustrine Emergent Wetland	PEM1	SP01, SP03	Located in depositional areas of Lake Creek.	12.59
Palustrine Scrub-Shrub Wetland	PSS1			0
total acreage of Aquatic Features				12.59

SUMMARY AND CONCLUSIONS

A routine ARI was conducted on the 40-acre study area at the Irish Acres property on W 4000 N in Teton County, Idaho on May 31, 2022 focusing on the areas surrounding irrigation features and mapped hydric soils. Field data collected from three (3) sample plots indicated that approximately 12.59-acres of the study area conformed to the definitional criteria for wetlands as per the USACE Wetland Delineation Manual. Wetlands were classified as palustrine emergent (12.59 acres).

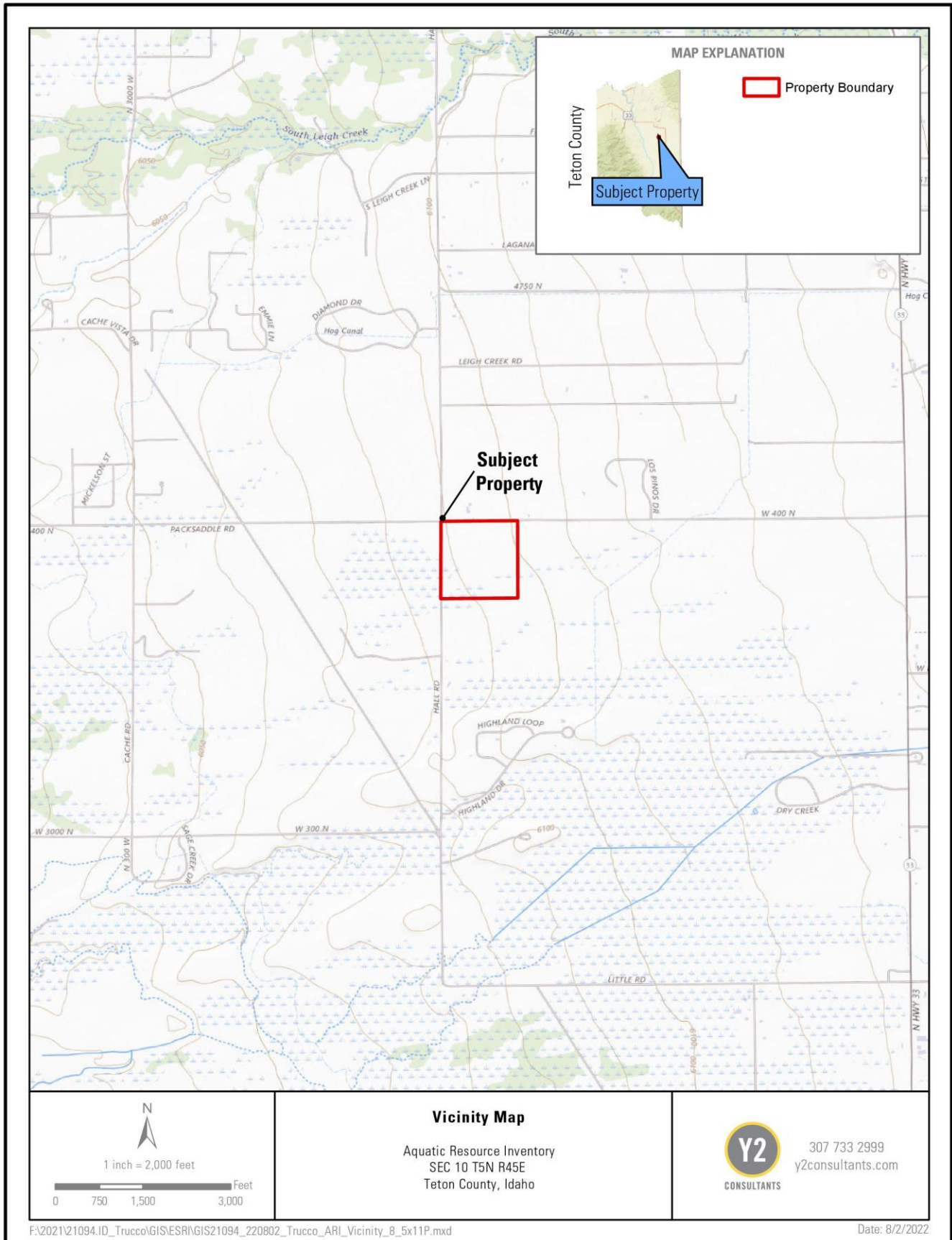
REGULATORY REQUIREMENTS

Pursuant to the approval by the USACE of the said mapping and delineation, on-site wetlands may constrain the development potential within the study area. Any development plans must address impacts to the wetlands and waterways, and permits will be required to fill or modify wetlands or other Waters of the United States. Teton County, Idaho, further requires a wetland disturbance approval process via their Title B Zoning regulations for areas mapped as jurisdictional wetlands by the USACE or defined as wetlands by the Clean Water Act. (Teton County, ID, 2009). Both permitting agencies require that a wetland fill permit applicant demonstrate that wetlands have been avoided or impacts minimized to the maximum extent practicable, and mitigation may be required in accordance with the quantity and type of wetland disturbance.

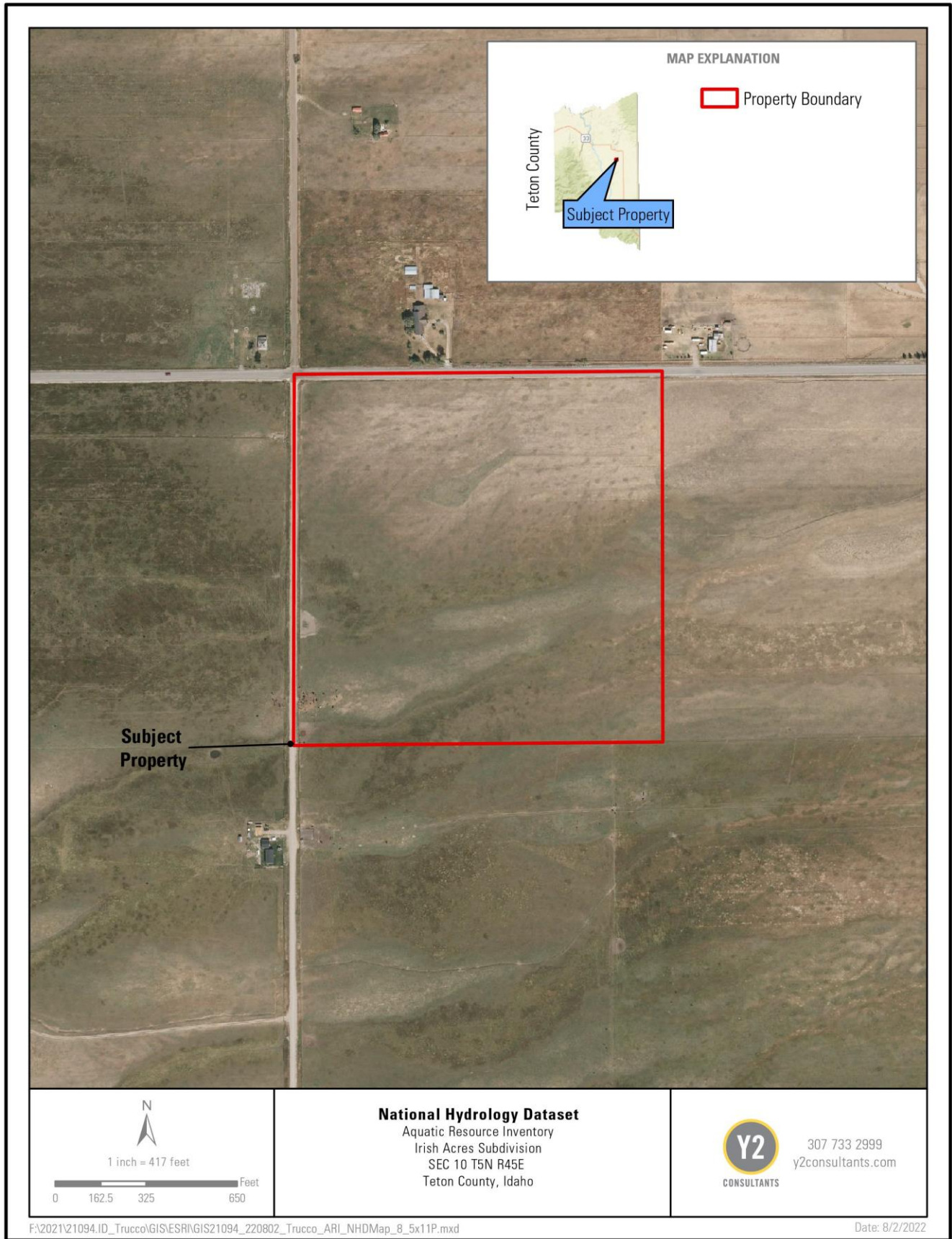
WORKS CITED

- Cowardin, L. M. (1979). *Classification of wetlands and deepwater habitats of the United States*. FWS/OBS-79/31. Washington, DC: USDI Fish and Wildlife Service.
- Environmental Laboratory. (1987). *Corps of Engineers Wetlands Delineation Manual, Technical Report Y-87-1*. Vicksburg, MS: U.S. Army Engineer Waterways Experiment Station.
- Jackson, Teton County. (2015). *Jackson-Teton County Comprehensive Plan and Land Use Regulations*. Jackson-Teton County.
- Lichvar, R.W., M. Butterwick, N.C. Melvin, and W.N. Kirchner. (2016). *The National Wetland Plant List: 2016 Update of Wetland Ratings*. Phytoneuron 2016-41: 1-42.
- NRCS. (2004). *USDA Field Office, WETs Climate Data*.
- Soil Survey Staff, Natural Resources Conservation Service, United States Department of Agriculture. (2017). *Web Soil Survey*. Retrieved from <http://websoilsurvey.nrcs.usda.gov/>

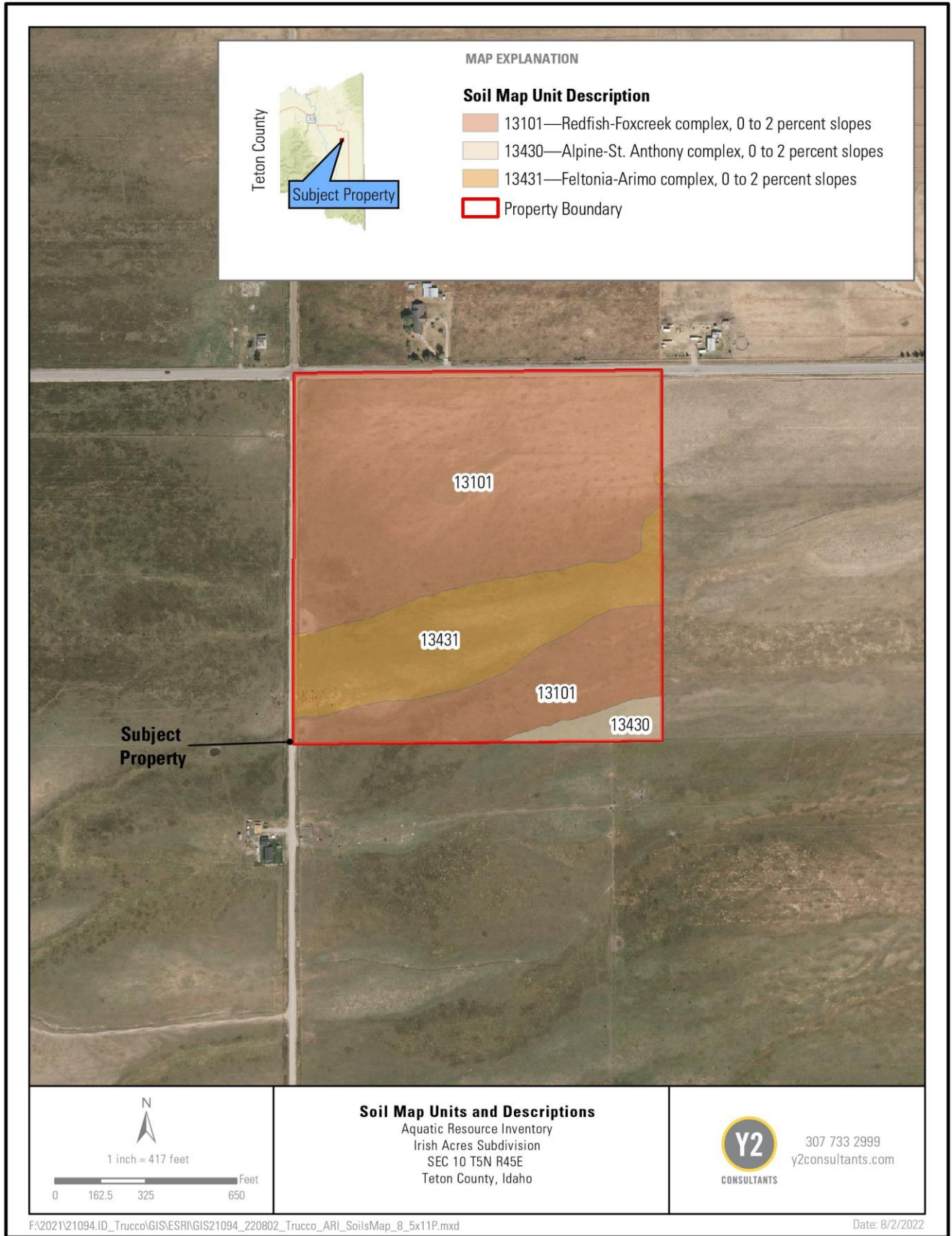
APPENDIX A – FIGURES



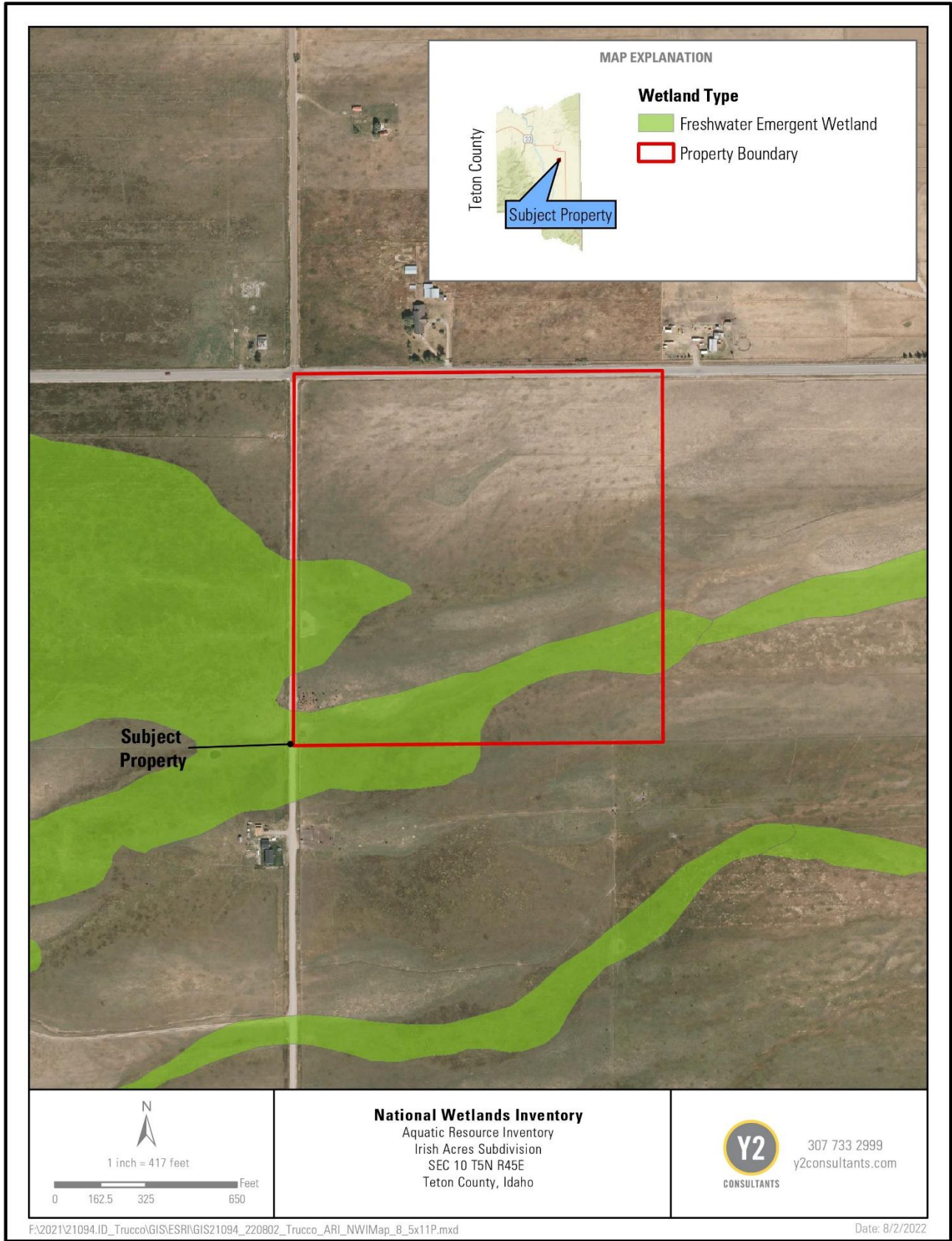
Appendix A - Figure 1. Vicinity Map, Lot 1&2 K-R Ranch Subdivision, Teton County, Idaho.



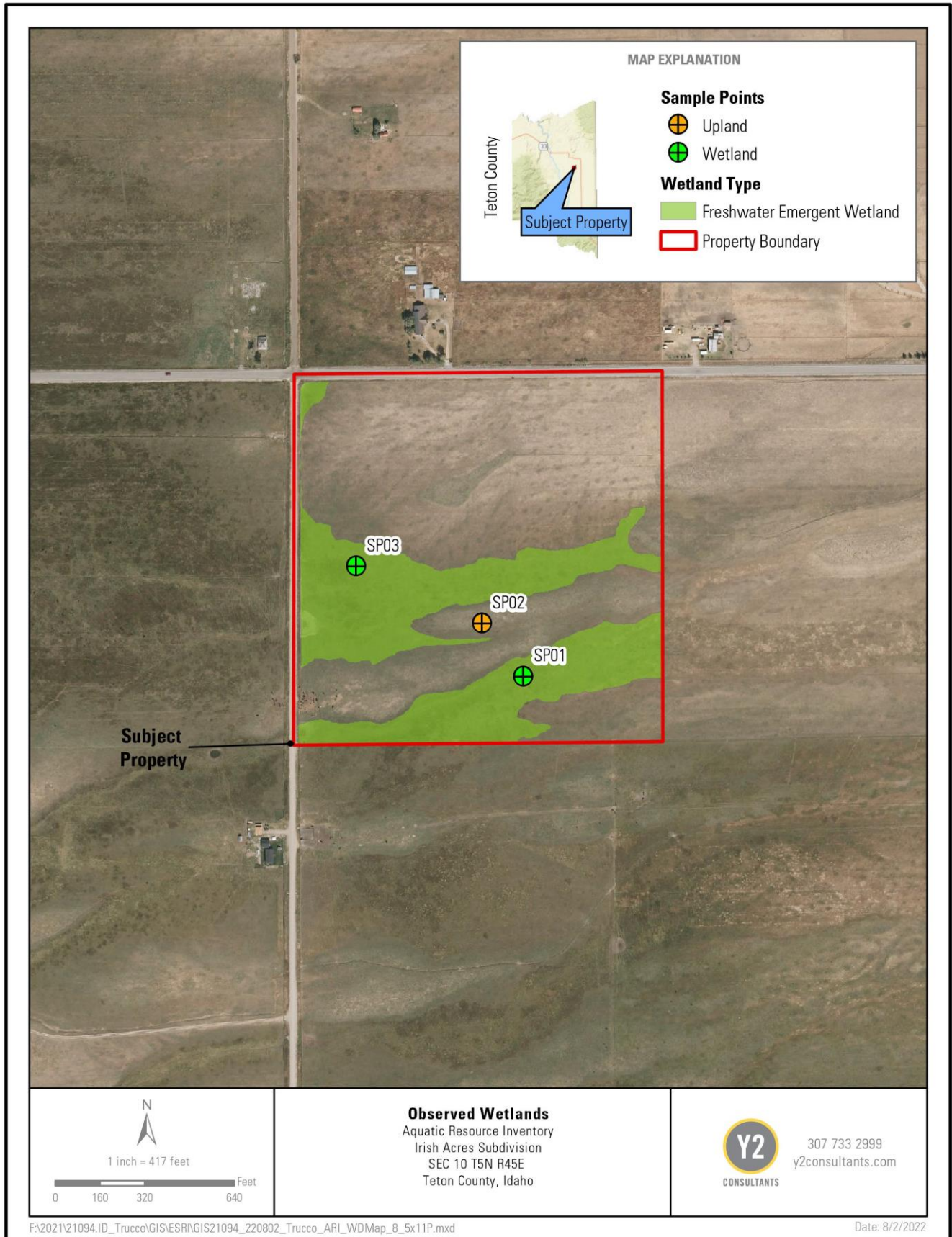
Appendix A - Figure 2. National Hydrology Dataset, Lot 1&2 K-R Ranch Subdivision, Teton County, Idaho.



Appendix A - Figure 3. Soil map units and Descriptions, Lot 1&2 K-R Ranch Subdivision, Teton County, Idaho.



Appendix A - Figure 4. National Wetlands Inventory, Lot 1&2 K-R Ranch Subdivision, Teton County, Idaho.



Appendix A - Figure 5. Observed wetlands and sample points, Lot 1&2 K-R Ranch Subdivision, Teton County, Idaho.

APPENDIX B – SAMPLE PLOT PHOTOS

SAMPLE POINT 01



Photo 1. SP01 hydrology, Irish Acres Subdivision, Teton County, ID, May 31, 2022.



Photo 2. SP01 vegetation, Irish Acres Subdivision, Teton County, ID, May 31, 2022.



Photo 3. SP01 soil pit, Irish Acres Subdivision, Teton County, ID, May 31, 2022.

SAMPLE POINT 02



Photo 4. SP02 hydrology, Irish Acres Subdivision, Teton County, ID, May 31, 2022.



Photo 5. SP02 vegetation, Irish Acres Subdivision, Teton County, ID, May 31, 2022.



Photo 6. SP02 soil pit, Irish Acres Subdivision, Teton County, ID, May 31, 2022.

SAMPLE POINT 03



Photo 1. SP03 hydrology, Irish Acres Subdivision, Teton County, ID, May 31, 2022.



Photo 2. SP03 vegetation, Irish Acres Subdivision, Teton County, ID, May 31, 2022.



21094 - Trucco
SP03
05.31.2022 12:43 PM
43.77935, -111.14005
North, 398-356 N 2000 W, Teton, IDA

Photo 9. SP03 soil pit, Irish Acres Subdivision, Teton County, ID, May 31, 2022.

APPENDIX C – DATA FORMS

WETLAND DETERMINATION DATA FORM – Western Mountains, Valleys, and Coast Region

Project/Site: 21094 - Trucco City/County: Tetonia/Teton Sampling Date: 5/31/2022
 Applicant/Owner: Cloud Veil LLC State: ID Sampling Point: SP 01
 Investigator(s): D. Goodman, N. Buchanan Section, Township, Range: Sec 10 T5N R45E
 Landform (hillslope, terrace, etc.): Alluvial Plain Local relief (concave, convex, none): none Slope (°): 0%
 Subregion (LRR): E - RM Region Lat: 43.77823 Long: -111.13786 Datum: WGS84
 Soil Map Unit Name: Redfish foxcreek complex, 0-2% slopes NWI classification: Emergent (PEM1C)

Are climatic / hydrologic conditions on the site typical for this time of year? Yes No (If no, explain in Remarks.)
 Are Vegetation , Soil , or Hydrology significantly disturbed? Are "Normal Circumstances" present? Yes No
 Are Vegetation , Soil , or Hydrology naturally problematic? (If needed, explain any answers in Remarks.)

SUMMARY OF FINDINGS – Attach site map showing sampling point locations, transects, important features, etc.

Hydrophytic Vegetation Present?	Yes <input checked="" type="checkbox"/>	No <input type="checkbox"/>	Is the Sampled Area within a Wetland? Yes <input checked="" type="checkbox"/> No <input type="checkbox"/>
Hydric Soil Present?	Yes <input checked="" type="checkbox"/>	No <input type="checkbox"/>	
Wetland Hydrology Present?	Yes <input checked="" type="checkbox"/>	No <input type="checkbox"/>	
Remarks: <u>Site is a wetland drainage area with heavy irrigation influence. Site visit pre-irrigation season. Grazed annually. Site is an irrigated pasture.</u>			

VEGETATION – Use scientific names of plants.

Tree Stratum (Plot size: <u>30 ft. radius</u>)	Absolute % Cover	Dominant Species?	Indicator Status	Dominance Test worksheet:
1. <u>NA - None</u>				Number of Dominant Species That Are OBL, FACW, or FAC: <u>2</u> (A)
2. _____				Total Number of Dominant Species Across All Strata: <u>2</u> (B)
3. _____				Percent of Dominant Species That Are OBL, FACW, or FAC: <u>100 %</u> (A/B)
4. _____				Prevalence Index worksheet:
50% = 0 20% = 0	<u>0</u> % = Total Cover			
Sapling/Shrub Stratum (Plot size: <u>15 ft. radius</u>)				OBL species <u>40</u> x 1 = <u>40</u>
1. <u>None</u>				FACW species <u>5</u> x 2 = <u>10</u>
2. _____				FAC species <u>45</u> x 3 = <u>135</u>
3. _____				FACU species <u>0</u> x 4 = <u>0</u>
4. _____				UPL species <u>0</u> x 5 = <u>0</u>
5. _____				Column Totals: <u>90</u> (A) <u>185</u> (B)
50% = 0 20% = 0	<u>0</u> % = Total Cover			Prevalence Index = B/A = <u>2.06</u>
Herb Stratum (Plot size: <u>5 ft. radius</u>)				Hydrophytic Vegetation Indicators: <input type="checkbox"/> 1 - Rapid Test for Hydrophytic Vegetation <input checked="" type="checkbox"/> 2 - Dominance Test is >50% <input checked="" type="checkbox"/> 3 - Prevalence Index is ≤3.0 ¹ <input type="checkbox"/> 4 - Morphological Adaptations ¹ (Provide supporting data in Remarks or on a separate sheet) <input type="checkbox"/> 5 - Wetland Non-Vascular Plants ¹ <input type="checkbox"/> Problematic Hydrophytic Vegetation ¹ (Explain) ¹ Indicators of hydric soil and wetland hydrology must be present, unless disturbed or problematic.
1. <u>Carex nebrascensis</u>	<u>40</u>	<u>yes</u>	<u>OBL</u>	
2. <u>Alopecurus pratensis</u>	<u>35</u>	<u>yes</u>	<u>FAC</u>	
3. <u>Agrostis stolonifera</u>	<u>5</u>		<u>FAC</u>	
4. <u>Poa pratensis</u>	<u>5</u>		<u>FAC</u>	
5. <u>Juncus balticus</u>	<u>5</u>		<u>FACW</u>	
6. _____				
7. _____				
8. _____				
9. _____				
10. _____				
11. _____				
50% = 50 20% = 20	<u>100</u> % = Total Cover			
Woody Vine Stratum (Plot size: <u>30 ft. radius</u>)				Hydrophytic Vegetation Present? Yes <input checked="" type="checkbox"/> No <input type="checkbox"/>
1. <u>None</u>				
2. _____				
50% = 0 20% = 0	<u>0</u> % = Total Cover			
% Bare Ground in Herb Stratum <u>10</u> %				
Remarks: RAPID Test - All dom are not OBL or FACW (FAILS). FAC Neutral - Drop FAC - 50% of Dom are OBL or FACW (PASSES). Grazing not started for season. Grazed annually. Site is an irrigated pasture.				

SOIL

Sampling Point: SP 1

Profile Description: (Describe to the depth needed to document the indicator or confirm the absence of indicators.)								
Depth (inches)	Matrix		Redox Features				Texture	Remarks
	Color (moist)	%	Color (moist)	%	Type ¹	Loc ²		
0-3"	7.5YR 2.5/1	100%	None				n/a	OM - Mucky root material
3-15"	7.5YR 2.5/2	95%	5YR 5/8	5%	C	M	SCL	gr struct., grvl pres, cbl inc. with depth
15-23"	7.5YR 2.5/2	100	none				SCL	cbl inc. with depth (50% Cobble)
¹ Type: C=Concentration, D=Depletion Texture: Si = Silty, C = Clay, S = Sand, L = Loam ² Location: PL=Pore Lining, M=Matrix.								
Hydric Soil Indicators: (Applicable to all LRRs, unless otherwise noted.)						Indicators for Problematic Hydric Soils³:		
<input type="checkbox"/> Histosol (A1)	<input checked="" type="checkbox"/> Sandy Redox (S5)		<input type="checkbox"/> 2 cm Muck (A10)					
<input type="checkbox"/> Histic Epipedon (A2)	<input type="checkbox"/> Stripped Matrix (S6)		<input type="checkbox"/> Red Parent Material (TF2)					
<input type="checkbox"/> Black Histic (A3)	<input type="checkbox"/> Loamy Mucky Mineral (F1) (except MLRA 1)		<input type="checkbox"/> Very Shallow Dark Surface (TF12)					
<input type="checkbox"/> Hydrogen Sulfide (A4)	<input type="checkbox"/> Loamy Gleyed Matrix (F2)		<input type="checkbox"/> Other (Explain in Remarks)					
<input type="checkbox"/> Depleted Below Dark Surface (A11)	<input type="checkbox"/> Depleted Matrix (F3)							
<input type="checkbox"/> Thick Dark Surface (A12)	<input type="checkbox"/> Redox Dark Surface (F6)							
<input checked="" type="checkbox"/> Sandy Mucky Mineral (S1)	<input type="checkbox"/> Depleted Dark Surface (F7)							
<input type="checkbox"/> Sandy Gleyed Matrix (S4)	<input type="checkbox"/> Redox Depressions (F8)							
Restrictive Layer (if present):								
Type: <u>NA</u>								
Depth (inches): <u>NA</u>								
Remarks:						Hydric Soil Present? Yes <input type="checkbox"/> No <input checked="" type="checkbox"/>		
Redox is apparent below 3 inches. The soil is very granular.								
Hydrology: Site is along a drainage pattern that follows an upland bench. Site visit occurred before seasonal irrigation water was turned on. During dry season wetland hydrology passes due to drainage and passing FAC Neutral test.								

HYDROLOGY

Wetland Hydrology Indicators:		
Primary Indicators (minimum of one required; check all that apply)	Secondary Indicators (2 or more required)	
<input type="checkbox"/> Surface Water (A1)	<input type="checkbox"/> Water-Stained Leaves (B9) (except MLRA 1, 2, 4A, and 4B)	<input type="checkbox"/> Water-Stained Leaves (B9) (MLRA 1, 2, 4A, and 4B)
<input type="checkbox"/> High Water Table (A2)	<input type="checkbox"/> Salt Crust (B11)	<input checked="" type="checkbox"/> Drainage Patterns (B10)
<input type="checkbox"/> Saturation (A3)	<input type="checkbox"/> Aquatic Invertebrates (B13)	<input type="checkbox"/> Dry-Season Water Table (C2)
<input type="checkbox"/> Water Marks (B1)	<input type="checkbox"/> Hydrogen Sulfide Odor (C1)	<input type="checkbox"/> Saturation Visible on Aerial Imagery (C9)
<input type="checkbox"/> Sediment Deposits (B2)	<input type="checkbox"/> Oxidized Rhizospheres along Living Roots (C3)	<input type="checkbox"/> Geomorphic Position (D2)
<input type="checkbox"/> Drift Deposits (B3)	<input type="checkbox"/> Presence of Reduced Iron (C4)	<input type="checkbox"/> Shallow Aquitard (D3)
<input type="checkbox"/> Algal Mat or Crust (B4)	<input type="checkbox"/> Recent Iron Reduction in Tilled Soils (C6)	<input checked="" type="checkbox"/> FAC-Neutral Test (D5)
<input type="checkbox"/> Iron Deposits (B5)	<input type="checkbox"/> Stunted or Stressed Plants (D1) (LRR A)	<input type="checkbox"/> Raised Ant Mounds (D6) (LRR A)
<input type="checkbox"/> Surface Soil Cracks (B6)	<input type="checkbox"/> Other (Explain in Remarks)	<input type="checkbox"/> Frost-Heave Hummocks (D7)
<input type="checkbox"/> Inundation Visible on Aerial Imagery (B7)		
<input type="checkbox"/> Sparsely Vegetated Concave Surface (B8)		
Field Observations:		
Surface Water Present? Yes <input type="checkbox"/> No <input checked="" type="checkbox"/>	Depth (inches): _____	
Water Table Present? Yes <input type="checkbox"/> No <input checked="" type="checkbox"/>	Depth (inches): _____	
Saturation Present? Yes <input type="checkbox"/> No <input checked="" type="checkbox"/>	Depth (inches): _____	
(includes capillary fringe)		Wetland Hydrology Present? Yes <input checked="" type="checkbox"/> No <input type="checkbox"/>
Describe Recorded Data (stream gauge, monitoring well, aerial photos, previous inspections), if available:		
Remarks:		
Site is along a drainage pattern that follows an upland bench. Site visit occurred before seasonal irrigation water was turned on. Durin		

WETLAND DETERMINATION DATA FORM – Western Mountains, Valleys, and Coast Region

Project/Site: 21094 - Trucco City/County: Tetonia/Teton Sampling Date: 5/31/2022
 Applicant/Owner: Cloud Veil LLC State: ID Sampling Point: SP 02
 Investigator(s): D. Goodman, N. Buchanan Section, Township, Range: Sec 10 T5N R45E
 Landform (hillslope, terrace, etc.): Bench Local relief (concave, convex, none): convex Slope (°): 1%
 Subregion (LRR): E - RM Region Lat: 43.77872 Long: -111.13838 Datum: WGS84
 Soil Map Unit Name: Feltonia Arimo Complex, 0-2% Slope NWI classification: N/A

Are climatic / hydrologic conditions on the site typical for this time of year? Yes No (If no, explain in Remarks.)
 Are Vegetation , Soil , or Hydrology significantly disturbed? Are "Normal Circumstances" present? Yes No
 Are Vegetation , Soil , or Hydrology naturally problematic? (If needed, explain any answers in Remarks.)

SUMMARY OF FINDINGS – Attach site map showing sampling point locations, transects, important features, etc.

Hydrophytic Vegetation Present? Yes <input type="checkbox"/> No <input checked="" type="checkbox"/> Hydric Soil Present? Yes <input type="checkbox"/> No <input checked="" type="checkbox"/> Wetland Hydrology Present? Yes <input type="checkbox"/> No <input checked="" type="checkbox"/>	Is the Sampled Area within a Wetland? Yes <input type="checkbox"/> No <input checked="" type="checkbox"/>
Remarks: Site on an upland bench between lower wetland sties. Project area is an irrigated pasture, and is grazed annually. Irrigation not started for the season.	

VEGETATION – Use scientific names of plants.

Tree Stratum (Plot size: 30 ft. radius)	Absolute % Cover	Dominant Species?	Indicator Status	
1. <u>NA - None</u>				Dominance Test worksheet: Number of Dominant Species That Are OBL, FACW, or FAC: <u>0</u> (A) Total Number of Dominant Species Across All Strata: <u>2</u> (B) Percent of Dominant Species That Are OBL, FACW, or FAC: <u>100 %</u> (A/B)
2. _____				
3. _____				
4. _____				
50% = 0 20% = 0	<u>0</u> % = Total Cover			
Sapling/Shrub Stratum (Plot size: 15 ft. radius)				
1. <u>None</u>				Prevalence Index worksheet: Total % Cover of: Multiply by: OBL species <u>0</u> x 1 = <u>0</u> FACW species <u>0</u> x 2 = <u>0</u> FAC species <u>15</u> x 3 = <u>45</u> FACU species <u>12</u> x 4 = <u>48</u> UPL species <u>35</u> x 5 = <u>175</u> Column Totals: <u>62</u> (A) <u>268</u> (B) Prevalence Index = B/A = <u>4.32</u>
2. _____				
3. _____				
4. _____				
5. _____				
50% = 0 20% = 0	<u>0</u> % = Total Cover			
Herb Stratum (Plot size: 5 ft. radius)				
1. <u>Bromus inermis</u>	<u>35</u>	<u>yes</u>	<u>UPL</u>	Hydrophytic Vegetation Indicators: <input type="checkbox"/> 1 - Rapid Test for Hydrophytic Vegetation <input type="checkbox"/> 2 - Dominance Test is >50% <input type="checkbox"/> 3 - Prevalence Index is ≤3.0 ¹ <input type="checkbox"/> 4 - Morphological Adaptations ¹ (Provide supporting data in Remarks or on a separate sheet) <input type="checkbox"/> 5 - Wetland Non-Vascular Plants ¹ <input type="checkbox"/> Problematic Hydrophytic Vegetation ¹ (Explain) ¹ Indicators of hydric soil and wetland hydrology must be present, unless disturbed or problematic.
2. <u>Poa pratensis</u>	<u>15</u>		<u>FAC</u>	
3. <u>Taraxacum officinale</u>	<u>10</u>		<u>FACU</u>	
4. <u>Achillea millefolium</u>	<u>2</u>		<u>FACU</u>	
5. <u>Carex filifolia</u>	<u>30</u>	<u>yes</u>	<u>-</u>	
6. _____				
7. _____				
8. _____				
9. _____				
10. _____				
11. _____				
50% = 51 20% = 20.4	<u>102</u> % = Total Cover			
Woody Vine Stratum (Plot size: 30 ft. radius)				
1. <u>None</u>				Hydrophytic Vegetation Present? Yes <input checked="" type="checkbox"/> No <input type="checkbox"/>
2. _____				
50% = 0 20% = 0	<u>0</u> % = Total Cover			
% Bare Ground in Herb Stratum <u>10</u> %				
Remarks: Fails Rapid test. Dominants are not OBL or FACW. Not hydrophytic vegetation. Upland vegetation present.				

SOIL

Sampling Point: SP 2

Profile Description: (Describe to the depth needed to document the indicator or confirm the absence of indicators.)								
Depth (inches)	Matrix		Redox Features				Texture	Remarks
	Color (moist)	%	Color (moist)	%	Type ¹	Loc ²		
0-2"	7.5YR 2.5/1	100%	None				n/a	dense root and OM, granular
2-14"	7.5YR 3/2	100%	none				SC	platy structure
14"+	7.5YR 7/2	100%	none				SC	
¹ Type: C=Concentration, D=Depletion			Texture: Si = Silty, C = Clay, S = Sand, L = Loam			² Location: PL=Pore Lining, M=Matrix.		
Hydric Soil Indicators: (Applicable to all LRRs, unless otherwise noted.)						Indicators for Problematic Hydric Soils³:		
<input type="checkbox"/> Histosol (A1)			<input type="checkbox"/> Sandy Redox (S5)			<input type="checkbox"/> 2 cm Muck (A10)		
<input type="checkbox"/> Histic Epipedon (A2)			<input type="checkbox"/> Stripped Matrix (S6)			<input type="checkbox"/> Red Parent Material (TF2)		
<input type="checkbox"/> Black Histic (A3)			<input type="checkbox"/> Loamy Mucky Mineral (F1) (except MLRA 1)			<input type="checkbox"/> Very Shallow Dark Surface (TF12)		
<input type="checkbox"/> Hydrogen Sulfide (A4)			<input type="checkbox"/> Loamy Gleyed Matrix (F2)			<input type="checkbox"/> Other (Explain in Remarks)		
<input type="checkbox"/> Depleted Below Dark Surface (A11)			<input type="checkbox"/> Depleted Matrix (F3)			³ Indicators of hydrophytic vegetation and wetland hydrology must be present, unless disturbed or problematic.		
<input type="checkbox"/> Thick Dark Surface (A12)			<input type="checkbox"/> Redox Dark Surface (F6)					
<input type="checkbox"/> Sandy Mucky Mineral (S1)			<input type="checkbox"/> Depleted Dark Surface (F7)					
<input type="checkbox"/> Sandy Gleyed Matrix (S4)			<input type="checkbox"/> Redox Depressions (F8)					
Restrictive Layer (if present):								
Type: <u>NA</u>								
Depth (inches): <u>NA</u>								
Remarks: Pit depth = 24" No hydric soil indicators observed. Soil is loamy with distinct horizon color change.								

HYDROLOGY

Wetland Hydrology Indicators:					
Primary Indicators (minimum of one required; check all that apply)			Secondary Indicators (2 or more required)		
<input type="checkbox"/> Surface Water (A1)			<input type="checkbox"/> Water-Stained Leaves (B9) (except MLRA 1, 2, 4A, and 4B)	<input type="checkbox"/> Water-Stained Leaves (B9) (MLRA 1, 2, 4A, and 4B)	
<input type="checkbox"/> High Water Table (A2)			<input type="checkbox"/> Salt Crust (B11)	<input type="checkbox"/> Drainage Patterns (B10)	
<input type="checkbox"/> Saturation (A3)			<input type="checkbox"/> Aquatic Invertebrates (B13)	<input type="checkbox"/> Dry-Season Water Table (C2)	
<input type="checkbox"/> Water Marks (B1)			<input type="checkbox"/> Hydrogen Sulfide Odor (C1)	<input type="checkbox"/> Saturation Visible on Aerial Imagery (C9)	
<input type="checkbox"/> Sediment Deposits (B2)			<input type="checkbox"/> Oxidized Rhizospheres along Living Roots (C3)	<input type="checkbox"/> Geomorphic Position (D2)	
<input type="checkbox"/> Drift Deposits (B3)			<input type="checkbox"/> Presence of Reduced Iron (C4)	<input type="checkbox"/> Shallow Aquitard (D3)	
<input type="checkbox"/> Algal Mat or Crust (B4)			<input type="checkbox"/> Recent Iron Reduction in Tilled Soils (C6)	<input type="checkbox"/> FAC-Neutral Test (D5)	
<input type="checkbox"/> Iron Deposits (B5)			<input type="checkbox"/> Stunted or Stressed Plants (D1) (LRR A)	<input type="checkbox"/> Raised Ant Mounds (D6) (LRR A)	
<input type="checkbox"/> Surface Soil Cracks (B6)			<input type="checkbox"/> Other (Explain in Remarks)	<input type="checkbox"/> Frost-Heave Hummocks (D7)	
<input type="checkbox"/> Inundation Visible on Aerial Imagery (B7)					
<input type="checkbox"/> Sparsely Vegetated Concave Surface (B8)					
Field Observations:					
Surface Water Present?	Yes <input type="checkbox"/>	No <input checked="" type="checkbox"/>	Depth (inches): _____		
Water Table Present?	Yes <input type="checkbox"/>	No <input checked="" type="checkbox"/>	Depth (inches): _____		
Saturation Present? (includes capillary fringe)	Yes <input type="checkbox"/>	No <input checked="" type="checkbox"/>	Depth (inches): _____		
Wetland Hydrology Present? Yes <input type="checkbox"/> No <input checked="" type="checkbox"/>					
Describe Recorded Data (stream gauge, monitoring well, aerial photos, previous inspections), if available:					
Remarks: Has no wetland hydrology indicators. Site is on a slight bench between two lower drainage areas.					

WETLAND DETERMINATION DATA FORM – Western Mountains, Valleys, and Coast Region

Project/Site: 21094 - Trucco City/County: Tetonia/Teton Sampling Date: 5/31/2022
 Applicant/Owner: Cloud Veil LLC State: ID Sampling Point: SP 03
 Investigator(s): D. Goodman, N. Buchanan Section, Township, Range: Sec 10 T5N R45E
 Landform (hillslope, terrace, etc.): Plain Local relief (concave, convex, none): _____ Slope (°): 0%
 Subregion (LRR): E - RM Region Lat: 43.77935 Long: -111.14005 Datum: WGS84
 Soil Map Unit Name: Redfish - Foxcreek complex, 0-2% slope NWI classification: (PEM1C) Emergent

Are climatic / hydrologic conditions on the site typical for this time of year? Yes No _____ (If no, explain in Remarks.)
 Are Vegetation _____, Soil _____, or Hydrology _____ significantly disturbed? Are "Normal Circumstances" present? Yes No _____
 Are Vegetation _____, Soil _____, or Hydrology _____ naturally problematic? (If needed, explain any answers in Remarks.)

SUMMARY OF FINDINGS – Attach site map showing sampling point locations, transects, important features, etc.

Hydrophytic Vegetation Present?	Yes <input checked="" type="checkbox"/>	No _____	Is the Sampled Area within a Wetland?	Yes <input checked="" type="checkbox"/>	No _____
Hydric Soil Present?	Yes <input checked="" type="checkbox"/>	No _____			
Wetland Hydrology Present?	Yes <input checked="" type="checkbox"/>	No _____			
Remarks: <u>Site is irrigation influenced. Parcel is an irrigated pasture. Grazed annually, grazing and irrigation not started for season.</u>					

VEGETATION – Use scientific names of plants.

Tree Stratum (Plot size: <u>30 ft. radius</u>)	Absolute % Cover	Dominant Species?	Indicator Status	Dominance Test worksheet:	
1. <u>NA - None</u>	_____	_____	_____	Number of Dominant Species That Are OBL, FACW, or FAC: <u>2</u> (A)	
2. _____	_____	_____	_____	Total Number of Dominant Species Across All Strata: <u>2</u> (B)	
3. _____	_____	_____	_____	Percent of Dominant Species That Are OBL, FACW, or FAC: <u>100 %</u> (A/B)	
4. _____	_____	_____	_____	Prevalence Index worksheet:	
50% = 0 20% = 0	<u>0</u> % = Total Cover				Total % Cover of: _____ Multiply by: _____
Sapling/Shrub Stratum (Plot size: <u>15 ft. radius</u>)				OBL species <u>40</u> x 1 = <u>40</u>	
1. <u>NA - None</u>	_____	_____	_____	FACW species <u>15</u> x 2 = <u>30</u>	
2. _____	_____	_____	_____	FAC species <u>20</u> x 3 = <u>60</u>	
3. _____	_____	_____	_____	FACU species <u>15</u> x 4 = <u>60</u>	
4. _____	_____	_____	_____	UPL species <u>5</u> x 5 = <u>25</u>	
5. _____	_____	_____	_____	Column Totals: <u>95</u> (A) <u>215</u> (B)	
50% = 0 20% = 0	<u>0</u> % = Total Cover			Prevalence Index = B/A = <u>2.26</u>	
Herb Stratum (Plot size: <u>5 ft. radius</u>)				Hydrophytic Vegetation Indicators:	
1. <u>Carex nebrascensis</u>	<u>40</u>	<u>yes</u>	<u>OBL</u>		___ 1 - Rapid Test for Hydrophytic Vegetation
2. <u>Taraxacum officinale</u>	<u>15</u>	_____	<u>FACU</u>		<input checked="" type="checkbox"/> 2 - Dominance Test is >50%
3. <u>Juncus balticus</u>	<u>15</u>	_____	<u>FACW</u>		<input checked="" type="checkbox"/> 3 - Prevalence Index is ≤3.0 ¹
4. <u>Thlaspi arvense</u>	<u>5</u>	_____	<u>UPL</u>		___ 4 - Morphological Adaptations ¹ (Provide supporting data in Remarks or on a separate sheet)
5. <u>Alopecurus pratensis</u>	<u>20</u>	<u>yes</u>	<u>FAC</u>		___ 5 - Wetland Non-Vascular Plants ¹
6. <u>Cirsium arvense</u>	<u>T</u>	_____	_____		___ Problematic Hydrophytic Vegetation ¹ (Explain)
7. _____	_____	_____	_____		¹ Indicators of hydric soil and wetland hydrology must be present, unless disturbed or problematic.
8. _____	_____	_____	_____		
9. _____	_____	_____	_____		
10. _____	_____	_____	_____		
11. _____	_____	_____	_____		
50% = 50 20% = 20	<u>100</u> % = Total Cover				
Woody Vine Stratum (Plot size: <u>30 ft. radius</u>)				Hydrophytic Vegetation Present? Yes <input checked="" type="checkbox"/> No _____	
1. <u>None</u>	_____	_____	_____		
2. _____	_____	_____	_____		
50% = 0 20% = 0	<u>0</u> % = Total Cover				
% Bare Ground in Herb Stratum <u>5</u> %					
Remarks: <u>Is consistent with the southern drainage area. Primarily carex with patches of Juncus and bordering patches of dandelion.</u>					

SOIL

Sampling Point: SP 3

Profile Description: (Describe to the depth needed to document the indicator or confirm the absence of indicators.)								
Depth (inches)	Matrix		Redox Features				Texture	Remarks
	Color (moist)	%	Color (moist)	%	Type ¹	Loc ²		
0-3"	7.5YR 2.5/1	100%	None				SCL	Roots and OM increase %
3-10"	7.5YR 4/2	97%	7.5YR 4/6	3	C	M&PL	SCL	Redox and oxi. rhizospheres, gravel
10-17"	7.5YR 4/2	93%	7.5YR 4/6	7	C	M	SCL	Black mottling, cobble inc.with depth
17"+	7.5YR 4/3	97%	7.5YR 4/6	3	C	M	SCL	cobble increasing with depth
¹ Type: C=Concentration, D=Depletion			Texture: Si = Silty, C = Clay, S = Sand, L = Loam			² Location: PL=Pore Lining, M=Matrix.		
Hydric Soil Indicators: (Applicable to all LRRs, unless otherwise noted.)						Indicators for Problematic Hydric Soils³:		
<input type="checkbox"/> Histosol (A1)	<input checked="" type="checkbox"/> Sandy Redox (S5)		<input type="checkbox"/> 2 cm Muck (A10)			<input type="checkbox"/> Red Parent Material (TF2)		
<input type="checkbox"/> Histic Epipedon (A2)	<input type="checkbox"/> Stripped Matrix (S6)		<input type="checkbox"/> Very Shallow Dark Surface (TF12)			<input type="checkbox"/> Other (Explain in Remarks)		
<input type="checkbox"/> Black Histic (A3)	<input type="checkbox"/> Loamy Mucky Mineral (F1) (except MLRA 1)		<input type="checkbox"/> Loamy Gleyed Matrix (F2)			³ Indicators of hydrophytic vegetation and wetland hydrology must be present, unless disturbed or problematic.		
<input type="checkbox"/> Hydrogen Sulfide (A4)	<input type="checkbox"/> Loamy Gleyed Matrix (F2)		<input type="checkbox"/> Depleted Matrix (F3)					
<input type="checkbox"/> Depleted Below Dark Surface (A11)	<input type="checkbox"/> Depleted Matrix (F3)		<input type="checkbox"/> Redox Dark Surface (F6)					
<input type="checkbox"/> Thick Dark Surface (A12)	<input type="checkbox"/> Redox Dark Surface (F6)		<input type="checkbox"/> Depleted Dark Surface (F7)					
<input type="checkbox"/> Sandy Mucky Mineral (S1)	<input type="checkbox"/> Depleted Dark Surface (F7)		<input type="checkbox"/> Redox Depressions (F8)					
<input type="checkbox"/> Sandy Gleyed Matrix (S4)	<input type="checkbox"/> Redox Depressions (F8)							
Restrictive Layer (if present):						Hydric Soil Present? Yes <input checked="" type="checkbox"/> No <input type="checkbox"/>		
Type: <u>NA</u>								
Depth (inches): <u>NA</u>								
Remarks: Depth 23" Third horizon collected to sieve for texture.								

HYDROLOGY

Wetland Hydrology Indicators:					
Primary Indicators (minimum of one required; check all that apply)			Secondary Indicators (2 or more required)		
<input type="checkbox"/> Surface Water (A1)	<input type="checkbox"/> Water-Stained Leaves (B9) (except MLRA 1, 2, 4A, and 4B)		<input type="checkbox"/> Water-Stained Leaves (B9) (MLRA 1, 2, 4A, and 4B)		
<input type="checkbox"/> High Water Table (A2)	<input type="checkbox"/> Salt Crust (B11)		<input checked="" type="checkbox"/> Drainage Patterns (B10)		
<input type="checkbox"/> Saturation (A3)	<input type="checkbox"/> Aquatic Invertebrates (B13)		<input type="checkbox"/> Dry-Season Water Table (C2)		
<input type="checkbox"/> Water Marks (B1)	<input type="checkbox"/> Hydrogen Sulfide Odor (C1)		<input type="checkbox"/> Saturation Visible on Aerial Imagery (C9)		
<input type="checkbox"/> Sediment Deposits (B2)	<input checked="" type="checkbox"/> Oxidized Rhizospheres along Living Roots (C3)		<input type="checkbox"/> Geomorphic Position (D2)		
<input type="checkbox"/> Drift Deposits (B3)	<input type="checkbox"/> Presence of Reduced Iron (C4)		<input type="checkbox"/> Shallow Aquitard (D3)		
<input type="checkbox"/> Algal Mat or Crust (B4)	<input type="checkbox"/> Recent Iron Reduction in Tilled Soils (C6)		<input checked="" type="checkbox"/> FAC-Neutral Test (D5)		
<input type="checkbox"/> Iron Deposits (B5)	<input type="checkbox"/> Stunted or Stressed Plants (D1) (LRR A)		<input type="checkbox"/> Raised Ant Mounds (D6) (LRR A)		
<input type="checkbox"/> Surface Soil Cracks (B6)	<input type="checkbox"/> Other (Explain in Remarks)		<input type="checkbox"/> Frost-Heave Hummocks (D7)		
<input type="checkbox"/> Inundation Visible on Aerial Imagery (B7)					
<input type="checkbox"/> Sparsely Vegetated Concave Surface (B8)					
Field Observations:					
Surface Water Present?	Yes <input type="checkbox"/> No <input checked="" type="checkbox"/>	Depth (inches):	Wetland Hydrology Present? Yes <input checked="" type="checkbox"/> No <input type="checkbox"/>		
Water Table Present?	Yes <input type="checkbox"/> No <input checked="" type="checkbox"/>	Depth (inches):			
Saturation Present? (includes capillary fringe)	Yes <input type="checkbox"/> No <input checked="" type="checkbox"/>	Depth (inches):			
Describe Recorded Data (stream gauge, monitoring well, aerial photos, previous inspections), if available:					
Remarks: >50% of doms are OBL or FACW. Drainage area includes patches of depressional areas with unusual cover hydrophytic vegetation.					