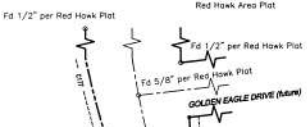
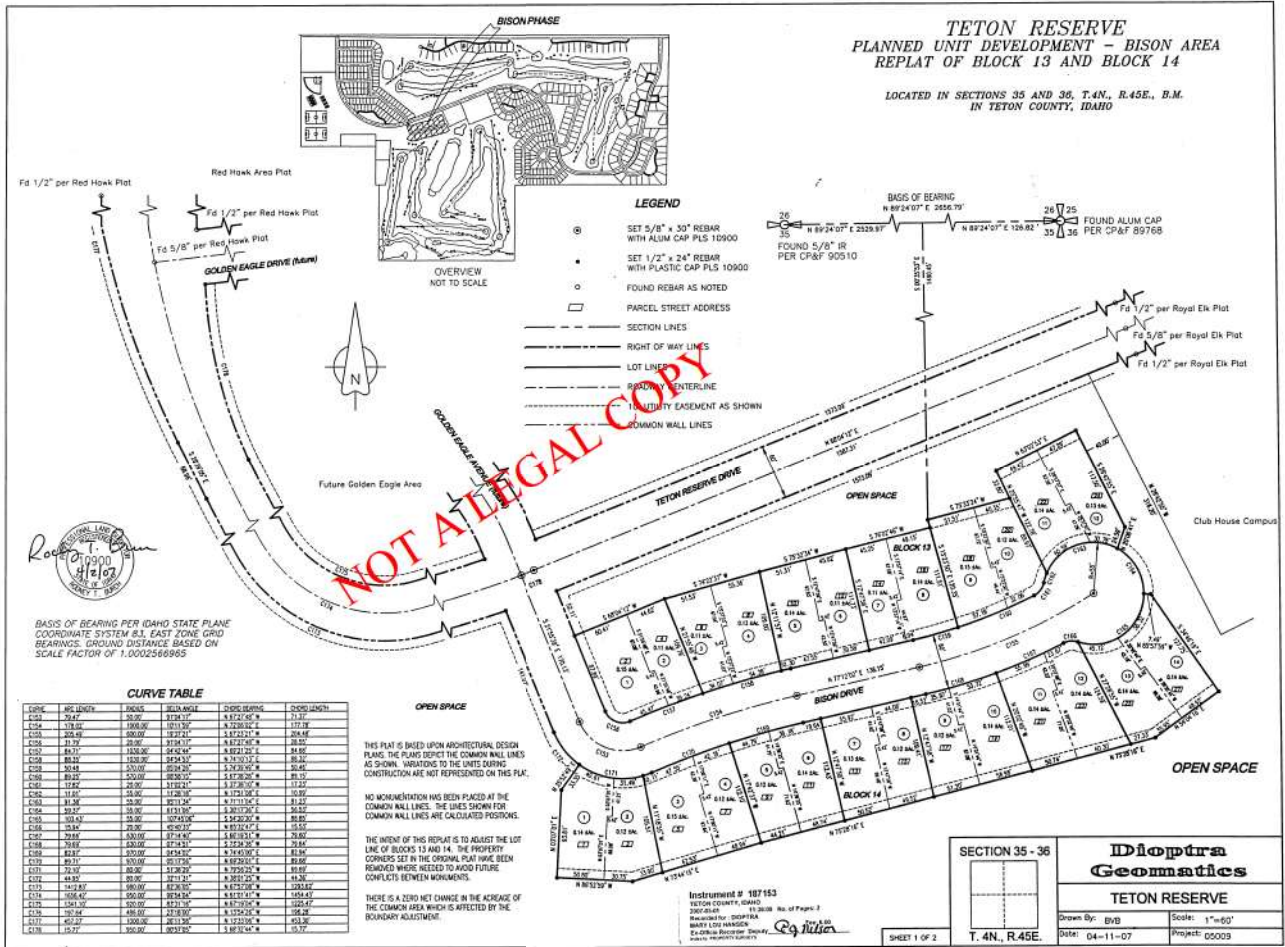


TETON RESERVE PLANNED UNIT DEVELOPMENT - BISON AREA REPLAT OF BLOCK 13 AND BLOCK 14

LOCATED IN SECTIONS 35 AND 36, T.4N, R.45E., B.M.
IN TETON COUNTY, IDAHO



- LEGEND**
- ⊙ SET 5/8" x 30" REBAR WITH ALUM CAP PLS 10900
 - SET 1/2" x 24" REBAR WITH PLASTIC CAP PLS 10900
 - FOUND REBAR AS NOTED
 - PARCEL STREET ADDRESS
 - SECTION LINES
 - - - RIGHT OF WAY LINES
 - LOT LINES
 - - - ROADWAY CENTERLINE
 - - - UTILITY EASEMENT AS SHOWN
 - - - COMMON WALL LINES

BASIS OF BEARING PER IDAHO STATE PLANE COORDINATE SYSTEM (S.I. EAST ZONE GRID) BEARINGS. GROUND DISTANCE BASED ON SCALE FACTOR OF 1.0002568955

CURVE TABLE

CURVE	ARC LENGTH	CHORD	CHORD BEARING	CHORD LENGTH
1004	26.27	38.00	S 87°21'45" W	47.37
1004	178.80	308.00	S 70°24'07" E	372.78
1005	205.49	380.00	S 87°21'42" W	204.88
1006	31.79	38.00	S 87°21'42" W	48.50
1007	84.77	118.00	S 84°42'56" W	84.82
1008	88.20	128.00	S 84°24'25" W	88.86
1009	30.48	33.00	S 84°24'25" W	30.48
1010	80.20	100.00	S 87°20'20" W	81.70
1011	128.27	200.00	S 87°20'20" W	173.20
1012	11.87	24.00	S 87°20'20" W	10.89
1013	81.38	100.00	S 71°11'36" E	81.20
1014	38.20	48.00	S 80°24'07" E	50.55
1015	103.62	100.00	S 87°21'42" W	85.80
1016	38.88	48.00	S 87°21'42" W	38.88
1017	29.81	30.00	S 74°43'07" W	28.80
1018	28.80	30.00	S 74°43'07" W	28.80
1019	82.81	100.00	S 74°43'07" W	81.80
1020	80.77	100.00	S 82°30'21" E	80.80
1021	20.20	24.00	S 82°30'21" E	19.20
1022	43.87	60.00	S 87°21'42" W	43.20
1023	142.87	180.00	S 87°21'42" W	139.80
1024	156.42	200.00	S 87°21'42" W	154.42
1025	154.70	200.00	S 87°21'42" W	152.70
1026	102.84	100.00	S 87°21'42" W	102.84
1027	40.27	50.00	S 87°21'42" W	40.27
1028	15.77	20.00	S 87°21'42" W	15.77

THIS PLAT IS BASED UPON ARCHITECTURAL DESIGN PLANS. THE PLANS RESPECT THE COMMON WALL LINES AS SHOWN. VARIATIONS TO THE UNITS DURING CONSTRUCTION ARE NOT REPRESENTED ON THIS PLAT.

NO MONUMENTATION HAS BEEN PLACED AT THE COMMON WALL LINES. THE LINES SHOWN FOR COMMON WALL LINES ARE CALCULATED POSITIONS.

THE INTENT OF THIS REPLAT IS TO ADJUST THE LOT LINE OF BLOCKS 13 AND 14. THE PROPERTY CORNERS SET IN THE ORIGINAL PLAT HAVE BEEN REMOVED WHERE NEEDED TO AVOID FUTURE CONFLICTS BETWEEN MONUMENTS.

THERE IS A ZERO NET CHANGE IN THE AREA OF THE COMMON AREA WHICH IS AFFECTED BY THE BOUNDARY ADJUSTMENT.

SECTION 35 - 36

Dioptra Geomatics

TETON RESERVE

Drawn By: BVB Scale: 1"=60'

Date: 04-11-07 Project: 0003

SHEET 1 OF 2 T.4N, R.45E.

Instrument # 187153
TETON COUNTY, IDAHO
300-41-01-00100 No. of Pages: 1
Recorded by: 200708A
BARRY LOU HANCOCK
24-0104-000000-000000
BARRY LOU HANCOCK
24-0104-000000-000000

