



RFO

Proposal for Teton County, Idaho County Building Department
Supplemental Services through Public Private Partnerships

ELECTRONIC

Teton County, Idaho

June 30, 2025 | 5:00 MT

Charity Campfield

Account Manager
307.292.1124
ccampfield@SAFEbuilt.com

David Spencer

Director of Operations
425.213.2612
dspencer@SAFEbuilt.com

SAFEbuilt Washington, LLC

SAFEbuilt[✓]



CONTENTS

1. Cover Letter	3
2. Overview	4
3. Key Personnel	6
4. Approach	7
5. Fee Schedule	13
6. Experience	14
7. References	15





HEADQUARTERS

444 N. Cleveland Avenue
Loveland, CO 80537
866.977.4111
www.safebuilt.com

BUILDING CODE SERVICES

Building Official
Plan Review
Inspection
Code Enforcement
Fire Prevention
Permit Technician
Permitting Software

PROFESSIONAL SERVICES

Planning & Zoning
Grant Writing & Management
Engineering
Parks/O&M/On-Site Services
Construction Services
Landscape Architecture & Urbanism
Construction Engineering
Inspection
IT, Data, & Technology Services
Real Estate/Right-of-Way
Transportation & Mobility
Surveying & Mapping
Disaster & Recovery

SALES/CONTRACT CONTACT

Charity Campfield
Account Manager
307.292.1124
ccampfield@safebuilt.com

OPERATIONS CONTACT

David Spencer
Director of Operations
425.213.2612
dspencer@safebuilt.com

PROJECT OFFICE

1715 114th Ave S.E.
Suite 204
Bellevue, WA 98004
245.213.2612

June 26, 2025

Teton County, Idaho
Attention: Dan Reyes, Teton County Manager
150 Courthouse Dr.
Driggs, ID 83422

RE: Request for Qualifications for Teton County, Idaho County Building Department Supplemental Services through Public Private Partnerships

Dear Dan Reyes and Evaluation Committee Members:

SAFEbuilt Washington, LLC (SAFEbuilt) is pleased to present our proposal in response to the Teton County, Idaho (County) Request for Proposal (RFQ) for Teton County, Idaho County Building Department Supplemental Services through Public Private Partnerships. Accurate and timely building department services are always critical to helping support community development. We assure you that the County can always rely on SAFEbuilt to provide quality and efficient solutions that deliver consistent customer satisfaction for the most reasonable price.

In order to provide your community with quality services, it is essential to choose a company with demonstrated abilities capable of fully managing the building inspection, plan review, and permit issuance services you need and when you need them. Our long-term experience with other Idaho and nearby communities provides SAFEbuilt with a thorough working knowledge of the County's requirements and expectations.

Our approach is simple. We offer a team of seasoned professionals with the experience and qualifications you need. We also bring a proactive, educational, customer-focused approach to every contract we support.

SAFEbuilt is your local partner with the capacity to customize services to meet your needs. We ensure your program will be implemented seamlessly, delivering the solutions your community needs in a manner that elected officials, County staff, stakeholders, and citizens desire and deserve. We recognize that different communities have different needs and objectives, and our efforts will address these specific goals and challenges to help you sustain a thriving community.

Our proposal details our services, qualifications, and fees for delivering outstanding services to support your community. We enthusiastically present this proposal for your review and evaluation, and thank you in advance for taking the time to assess it. I am the main point of contact for any questions or clarifications. I can be reached at 307.292.1124 or via email at ccampfield@safebuilt.com. Acceptance of Teton County's terms and conditions is subject to review by SAFEbuilt's legal team

Best Regards,

Charity Campfield, Account Manager
SAFEbuilt Washington, LLC



OVERVIEW

SAFEbuilt is committed to delivering efficient, customer-focused services that ensure code-compliant, completed projects for residents, businesses, and the County. To achieve contract success, we prioritize clear and consistent communication at all levels of our organization. Leveraging modern technology, we facilitate seamless communication with clients, residents, contractors, co-workers, and support staff. This approach ensures that all stakeholders are informed about projects in the County, enhancing team efficiency in daily operations.

Our proposed team will carry out their responsibilities independently and with professionalism, following all directions with minimal need for supervision. They possess deep expertise in design principles, local zoning regulations, topographic site plans, and applicable federal, state, and local laws and codes. They are also committed to maintaining job site safety and fully complying with OSHA standards. To ensure staff remain up to date with industry standards, SAFEbuilt requires a minimum of 32 hours of annual training—or 48 hours during years when new codes are adopted.

The team is dedicated to providing exemplary customer service while fulfilling its duties. They will attend County-required meetings, respond promptly to calls and emails, and consistently demonstrate professionalism, courtesy, and appropriate conduct both on and off the job site. This commitment ensures a high standard of service delivery and fosters a strong partnership with the County.

The SAFEbuilt team is highly proficient in electronic plan review processes and applications, with Bluebeam Revu as our preferred system. Our technology works seamlessly with the preferred software of the County. Our proposed staff will review permit applications, plans, shop drawings, and product approvals, identifying conflicts with applicable codes and providing detailed comments. Reviews will be conducted during the County's business hours, and we are confident in meeting or exceeding the standard plan review timelines outlined in the RFQ, often delivering faster turnaround times.

SAFEbuilt Plans Examiners will manage incoming plan submissions, ensuring they are properly recorded and providing customers with tools to track progress. They will thoroughly examine and analyze construction drawings, plans, and specifications to verify compliance with adopted local, state, and federal codes, ordinances, policies, and regulations. Additionally, they will attend pre-submittal and pre-construction meetings upon request and conduct pre-plan review meetings as needed to facilitate smooth project execution.

To ensure clarity and consistency during plan reviews, the SAFEbuilt team will use compliance checklists customized for Teton County. Review documents will include comment letters that clearly identify deficiencies, cite applicable construction drawing sheet numbers and code sections (with language included), and provide concise explanations of identified issues. Each review will be labeled as the first, second, or third review to track progress. Recommendations to approve, modify, or deny plans will be based on compliance with relevant laws,

codes, and ordinances. Customers will receive clear guidance on resolving deficiencies to achieve approval. Required special inspections or deferred submittals will also be noted in the comment letters.

Final review documents will be clearly marked to indicate approval for release, pending County authorization, ensuring an efficient and transparent process for all stakeholders. SAFEbuilt Plans Examiners will provide support to contractors, homeowners, and design professionals by answering code-related questions and offering design advice strictly within the context of achieving code compliance, both through written and verbal communication. All completed reviews will be thoroughly documented in the County's system of record, and project documents will be returned to the County for final processing and approval.

CAPABILITIES

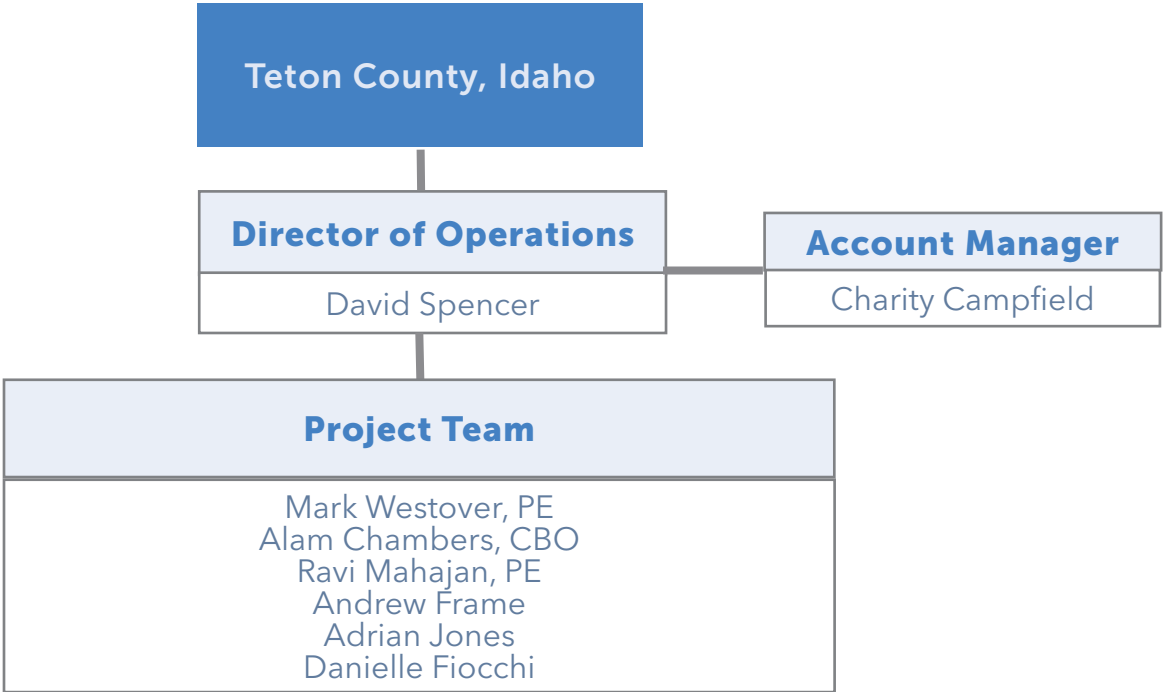
Each year, SAFEbuilt completes thousands of building department services, including new construction, renovations, expansions, and occupied or unoccupied buildings. Our expertise spans projects, including:

- Residential Developments (Single-Family, Townhouses, and Condos)
- Multi-Family Dwellings
- Mixed-Use Buildings
- Retirement Communities & Assisted Living Facilities
- LEED Buildings
- Hospitals and Medical Facilities
- High-Rise Buildings (Commercial and Residential)
- Large Commercial Retail Developments
- Low-Income Housing
- Parking Garages (above and below grade)
- Automated Parking Systems and Mechanical Car Stacker
- Industrial Buildings
- Manufacturing & Production Plants
- Preschools and Daycares
- Elementary, Middle, and High Schools
- Colleges and Universities
- Sorority/Fraternity Houses
- Student Housing
- City Halls
- Fire Stations
- Courthouses
- Government Buildings
- Recreational Centers
- Parks
- Museums
- Libraries
- Banks
- Churches
- Sports Fields
- Arenas
- Gymnasiums
- Grocery Stores
- Pharmacies
- Theme Parks
- Restaurants
- Shopping Malls
- Hotels & Motels
- Casinos
- Self-Storage Facilities
- Live Theaters
- Movie Theaters/Cinemas
- Production Studios
- Airport & Cruise Terminals
- Train Stations
- Toll Plazas
- Historical Buildings
- Refrigerated Buildings
- Threshold Buildings
- Cabanas and Gazebos
- Pools (Commercial and Residential)
- Modular Baths
- Spas
- Solar Panel Systems
- Construction Trailers
- Loading Docks
- Chillers
- Warehouses
- Fire Pump Houses
- Gatehouses
- Drainage Systems
- Silos
- Marinas/Waterfront Properties



KEY PERSONNEL

SAFEbuilt is pleased to present our team of building code experts below.



Key Personnel Experience	David Spencer, CBO	Danielle Fiocchi	Andrew Frame	Adrian Jones	Mark Westover, PE	Ravi Mahajan, PE	Alan Chambers, CBO
Building Plans Examiner	✓	✓	✓				✓
Civil Plans Examiner					✓		
Fire Protection				✓			
Structural Plans Examiner						✓	

KEY PERSONNEL EXPERTISE MATRIX							
Building Plans Examiner	✓	✓	✓				✓
Civil Plans Examiner					✓		
Fire Protection				✓			
Structural Plans Examiner						✓	



APPROACH

TURNAROUND TIMES FOR INSPECTION AND PLAN REVIEW SERVICES

SAFEbuilt will work with the County to provide inspection staff in a timely manner. SAFEbuilt will meet with the County before the contract starts to establish a customized inspection notification process. Our inspectors are familiar with many jurisdictional scheduling and tracking systems and can quickly adapt to jurisdiction requirements.

SAFEbuilt offers next-day inspections for any request received by 4:00 PM on the previous business day.

Most inspections take between 15 minutes and 2 hours to complete, depending on the type of inspection. We offer weekend and after-hours inspections on a scheduled basis for an additional fee. We will, of course, make ourselves available to respond to inspections related to emergencies.

SAFEbuilt proposes the following plan review turnaround times for a contract with the County.

Table 1. Plan Review Turnaround Times

TYPE OF PROJECT	INITIAL CHECK	RECHECK
Residential	5 working days or less	5 working days or less
Multi-Family	10 working days or less	5 working days or less
New Commercial	10 working days or less	5 working days or less
Commercial Alteration	10 working days or less	5 working days or less
All Other Reviews	Same day to 5 days	Same day to 5 days

A WELL-EQUIPPED TEAM

SAFEbuilt provides its employees with the materials, tools, and equipment necessary to perform all work required by the County. We provide our Inspectors with late-model vehicles with removable signage, and field-related equipment necessary to perform their duties. Some examples of what we supply our team with are:

- Laptops with mobile hot spots
- Safety devices and clothing required to meet OSHA requirements
- Standard business software and specialized software
- Personal protective equipment
- Tablets and mobile phones (loaded with electronic versions of essential codebooks)
- Insurance: Liability, Workers Compensation and Health, Dental, Vision, and Life





QUALITY CONTROL AND ASSURANCE

SAFEbuilt's success relies on delivering high-quality, detail-oriented services. Our Quality Control (QC) approach is proactive, ensuring oversight throughout the project, not just in the final review. Guided by Total Quality Management principles, each project has a customized QC plan detailing responsibilities, procedures, and standards. This ensures independent checks, data verification, compliance, and proper coordination of project documents.

At a minimum, SAFEbuilt's QC plan includes the following elements to uphold accuracy and timeliness:

- Clear understanding of the project scope.
- Verification of data accuracy and adherence to field procedures.
- Implementation of checks and balances throughout the process.
- Guidance for staff to ensure compliance with QC procedures.
- Confirmation of updated standards and methodologies.
- Integrated reviews at all levels of work.
- Field observations, documentation, guidelines, plans, and goals through internal monitoring and production audits.

To ensure we consistently deliver and maintain exceptional services for our customers, our Regional Operations Manager performs random quality evaluations of our staff throughout the year. These activities include:

- Standardized processes for intake, completion of returned work, email correspondence, review comment letters, inspection reports, and other items to ensure consistency and client satisfaction (e.g., logging review data into each municipality's system).
- Our Regional Operations Manager conducts periodic reviews to ensure completeness, accuracy, and consistency of work performed.
- Periodic peer review of others' plan reviews and ride-along with inspectors.
- Staff feedback as necessary for any discrepancies or improvements needed.
- Staff is paid to attend both internal and external training to grow professionally and improve skill sets.
- SAFEbuilt's Account Manager and Regional Operations Manager conduct periodic check-ins with clients for feedback on satisfaction with work performed and services provided.
- SAFEbuilt's Account Manager sends periodic customer satisfaction surveys for feedback on work performed and services provided.
 - SAFEbuilt uses both check-ins and surveys to find possible opportunities to improve client satisfaction, work performed, and services provided, as necessary.

In addition to the routing and tracking systems used for plan review and inspections, staff receive regular training to stay up-to-date on current codes, ordinances, amendments, and regulations. We also mitigate risks through our ability to direct additional resources from our corporate operations or regional operations for immediate staffing needs.



COMMUNITYCORE SOLUTIONS: COMMUNITY DEVELOPMENT SOFTWARE

CommunityCore Solutions is SAFEbuilt's proprietary, online community development software tool for managing permitting, plan reviews and approvals, and code enforcement and inspection activities. CommunityCore integrates with other government software systems. It is designed to streamline and automate many building department processes, helping to ensure compliance, manage workflows, generate activity reporting, and provide transparency to all stakeholders.

CommunityCore is divided into three interface modules, depending on the user.



CommunityCore for Building Departments

Users of CommunityCore can:

- Manage permit applications and permits throughout their life cycle.
- Assess fees and collect payment.
- Manage contractor and business licenses.
- Create and track projects.
- Manage how the system works for you by customizing workflows, defining customer permit fields, and managing users.
- Generate reports.



CommunityConnect for Contractors & Communities

Users of CommunityConnect can:

- Apply for permits.
- Track existing permits.
- Upload plans.
- Request inspections.
- Access permit documents, including permit certificates and plan reviews.
- View inspection results.
- Pay fees.



InspectorConnect for Code Enforcement

Inspectors and Code Compliance Officers can use InspectorConnect to:

- Easily view their assigned work.
- Organize stops for improved efficiency.
- Automatically send inspection results to the contractor or permit applicant.
- Access key documents, such as plans and certificates.
- Schedule, reschedule, or assign inspections in the field.
- Look up permit information from the field.

Created by people who have worked in building departments like yours, CommunityCore Solutions are simple yet flexible enough to handle the work you and your team do every day. We offer a genuinely unique combination—large company strength and stability together with small company personalized and responsive support.

If the County selects SAFEbuilt as its service provider for this RFP, we will provide CommunityCore Solutions permitting software at no cost for up to three users. CommunityCore can help streamline your processes and improve efficiency. To get started, simply contact your Account Manager, Ms. Charity Campfield. She'll be happy to assist!

In the meantime, we invite you to watch a recent webinar, "Understanding Electronic Permitting Systems," for a quick overview: https://content.safebuilt.com/communitycore_demo or follow the link in this QR code.



ROBUST TECHNOLOGY

SAFEbuilt uses technology to improve customer service, increase efficiency, provide consistency, and ease the user experience. We use a combination of both in-house-developed software and commercial off-the-shelf (COTS) applications that we have customized to meet the specific needs of our clients. This blend of technology allows us to streamline operations, maintain high standards of service, and adapt to the unique requirements of each project. The following provides an overview of our technologies, including our in-house permitting software system, CommunityCore Solutions (discussed in more detail on page 9).



COMMUNITYCORE SOLUTIONS is a suite of proprietary applications that streamline operations for constituents, municipal employees, private developers, and SAFEbuilt staff. This results in more efficiency, cost savings, improved customer experience, and enhanced operational oversight.

COMMUNITYCORE SOLUTIONS	CommunityConnect	The client and constituent interface of CommunityCore allows applicants to easily request building permits, upload plans, and schedule inspections.	<input checked="" type="checkbox"/> Field Ready <input checked="" type="checkbox"/> Front Office	
	InspectorConnect	CommunityCore's mobile app for inspectors facilitates on-site scheduling, inputting findings, and completing inspections.	<input checked="" type="checkbox"/> Field Ready	
	PRO	The Plan Review Optimization or "PRO" app uses advanced automation and artificial intelligence to categorize and assign workloads efficiently.	<input checked="" type="checkbox"/> Field Ready	
	SAFEreview	A portal for assigning and sharing building plans across locations, utilizing SAFEbuilt's national workforce. It features a marketplace for flexible plan availability to a variable workforce.	<input checked="" type="checkbox"/> Field Ready	
	SAFEtime	Mobile app for streamlined time entry, enhancing customer billing, and optimizing field worker utilization.	<input checked="" type="checkbox"/> Field Ready <input checked="" type="checkbox"/> Timekeeping <input checked="" type="checkbox"/> Back Office	
	SAFEbill	Billing system seamlessly interfaces with front- and back-office applications, automating customer invoice generation.	<input checked="" type="checkbox"/> Field Ready <input checked="" type="checkbox"/> Billing	
BACK OFFICE SYSTEMS FOR SCALABILITY				
Salesforce Customer Relationship Management (CRM) Platform	UKG Human Resources & Payroll System	IBM Planning Analytics Data Warehouse & Financial Analytics	Power BI Real-time Operating Reports & KPIs	SAGE Intacct Financial System

STREAMLINED FLEET MANAGEMENT WITH GEOTAB

SAFEbuilt uses fleet management software (Geotab) to track and control vehicle costs with improved inspection routing and insight into vehicle activity to enhance potential cost efficiencies further.

Technology Proficiencies

Our team is proficient with many of the major permitting systems available. Examples of the systems we have used for current and previous clients include, but are not limited to:

- ▶ SAFEbuilt's CommunityCore Solutions
- ▶ BS&A
- ▶ EnerGov
- ▶ SAFEbuilt's Gov-Easy
- ▶ Citizenserve
- ▶ MyGov
- ▶ Accela
- ▶ iWorq
- ▶ eTRAKiT

Additionally, all members of our team are proficient in standard office applications, including the Microsoft Office Suite and Adobe Acrobat.



MINIMIZING STAFF INVOLVEMENT WHILE MAINTAINING EFFICIENCY AND TRANSPARENCY

SAFEbuilt wants to ensure that all appropriate communication, correspondence, and reports are completed on an ongoing basis in a timely manner to the satisfaction of the County. One of the keys to the efficient and successful flow of information is clear, effective communication. Everyone involved in a contract of this size and scope must be aware of changes, progress, and challenges. We commit to working with you to determine the best ways to communicate the right information to the right people at the right time.

Our priority is to ensure the best possible experience working with our team—with minimum impact on the County and its citizens. Frequent meetings are an integral part of the plan, especially at contract start, and involve all applicable staff from the County and SAFEbuilt. It is important that everyone involved be aware of progress and changes they can expect going forward. We will prepare communications that can be shared with all County staff, detailing what to expect during contract integration and moving forward.

Our goal is to ensure a seamless experience while minimizing disruption to the County and its citizens. To achieve this, we propose the following communication strategy:

Regular Meetings. We will conduct meetings, particularly during the contract initiation phase, involving key personnel from both the County and SAFEbuilt. These meetings will ensure all parties are informed about progress and upcoming changes.

Staff Communications. We will prepare and distribute comprehensive updates to all County staff, outlining expectations during the contract transition and beyond.

Customized Reporting. We will work with you to develop a reporting schedule and format that meets your specific needs. This may include:

- Monthly, quarterly, and annual reports
- Summaries of activity levels
- Performance metric assessments
- Other items of particular interest to the County

Ongoing Communication. As previously mentioned, throughout the contract, we will maintain clear and consistent communication with the County, adapting our approach as necessary to ensure optimal information flow. By implementing these measures, we aim to foster transparency, promote collaboration, and facilitate a smooth working relationship between all parties involved in the contract.

SAFEbuilt staff is professional and respectful in every way, and all staff will accept directions and instructions while performing their responsibilities independently and professionally with minimal supervision required.

REMOTE VIRTUAL INSPECTIONS (RVI)

SAFEbuilt offers remote virtual inspections (RVI) for your community's convenience and safety. Remote inspections save time and money. Rather than waiting for an inspector to arrive from another job, they can be there in moments to efficiently walk residents and contractors through the inspection. RVIs also help reduce the number of people on a job site, supporting social distancing and public health. Teams throughout the SAFEbuilt family of companies currently use RVIs in Colorado, Florida, Illinois, Michigan, Minnesota, Ohio, Pennsylvania, Texas, Wisconsin, and Washington.

SAFEbuilt uses Blitzz Remote Visual Assistance software to complete these inspections. This technology allows us to easily connect with residents and contractors without downloading an app or logging in. Inspectors can control recording and taking photos to quickly complete inspections like water heaters, electrical reconnects and service upgrades, and residential re-inspections. RVI technology also allows our team to accomplish roofing inspections more safely and efficiently. For buildings and homes with especially steep roofs, we can open a remote inspection session with the contractor and walk them through the inspection process.



Approved inspections are determined by the local municipality, but can include:

- Porches
- Small Projects (fence, exterior remodels)
- Rooftop
- Rooftop Solar (photovoltaic)
- Electrical Service Upgrades
- Electrical Reconnects
- Water Heaters
- Gas Line Installations
- Parking Shade Structures
- Detached Storage Sheds
- Residential Addition/Alternation Inspections
- Follow-Up Inspections (must verify with inspector)

Remote video inspections cannot be used for assessment of damage from fires and vehicles, or restorations of utilities and critical facilities. These will be performed as typical field inspections as required by the Building Official.

We recommend Remote Virtual Inspections (RVIs) to our on-call clients as an effective way to maximize the efficiency of their SAFEbuilt inspection team. RVIs are typically faster than on-site inspections and eliminate travel time between jobs, streamlining the process. We would be delighted to discuss how this capability could benefit the County. If the County is interested in exploring this service, please contact the Account Manager listed on the cover page of this proposal to arrange a demonstration.



FEE SCHEDULE

ON-CALL AS-NEEDED & REQUESTED JURISDICTIONAL WORK:

Service Fee Schedule	
Inspection Services • Building, Mechanical, Energy Code (excludes plumbing & electrical - performed by state of Idaho DOPL)	\$110.00 per hour - one (1) hour minimum**
Plan Review Services - Residential & Commercial • Building, Mechanical, Energy Code (excludes plumbing & electrical - performed by state of Idaho DOPL) • Meetings by Plans Examiner	\$115.00 per hour - one (1) hour minimum
Structural Engineering Plan Review	\$165.00 per hour - one (1) hour minimum
Building Official Services	\$145.00 per hour - one (1) hour minimum
After Hours/Emergency Inspection Services	\$135.00 per hour - one (1) hour minimum
**Hourly inspection time tracked will include travel time from Consultant's base location to Municipality or first inspection site up to one (1) hour away. Time tracked will end when the inspector completes the last scheduled inspection and leaves Municipality or last inspection back to Consultant's base location up to one (1) hour away. Overall time tracked will also include all travel time between inspection sites, total roundtrip travel as described, and all administrative work related to inspection support.	

INDEPENDENT 3RD PARTY PLAN REVIEWS (OUTSIDE OF JURISDICTION REVIEW(S)):

Includes: Building, Mechanical, Plumbing, Energy Code (Excludes Plumbing & Electrical-performed by state of Idaho DOPL)

Type:	Valuation	SAFEbuilt Fee
\$1.00 - \$500.00	FLAT RATE -->	\$12.08
\$501.00 - \$2,000.00	\$2,000.00	\$36.36
\$2,000.01 - \$25,000.00	\$25,000.00	\$205.41
\$25,000.01 - \$50,000.00	\$50,000.00	\$337.97
\$50,000.01 - \$100,000.00	\$100,000.00	\$521.72
\$100,000.01 - \$500,000.00	\$500,000.00	\$1697.72
\$500,000.01 - \$1,000,000.00	\$1,000,000.00	\$2944.59
\$1,000,000.01 AND UP	\$5,000,000.00	\$9,559.59

EXPERIENCE

Since 2023 SAFEbuilt, LLC has provided comprehensive building department services to the **City of Ketchum, Idaho** including Building Official oversight, plan review, and inspection services. The Building Official supports municipal staff, oversees code compliance, recommends process and fee improvements, and ensures quality assurance. Plan review and inspections are conducted in alignment with adopted codes and local amendments, with specified turnaround times and next-day inspection scheduling. Services are performed during regular business hours, with on-site presence and responsive support to both applicants and staff.



SAFEbuilt, LLC is providing full-time building inspection and fire protection inspection services for the **Hoback Club development in Teton Village, Jackson Hole, Wyoming**. Services commenced on August 1, 2022, and have been extended through December 31, 2025. The project includes daily, as-requested code-compliant inspections using ICC-certified inspectors for vertical construction components. Inspections exclude site infrastructure and electrical, the latter being handled by the Jackson Hole Fire District. In July 2024, the scope was expanded to include fire inspection services, with both building and fire inspections conducted under a fixed monthly fee structure. SAFEbuilt's personnel are supported by housing and a project vehicle provided by the Owner, Cody Lane Development Corporation.

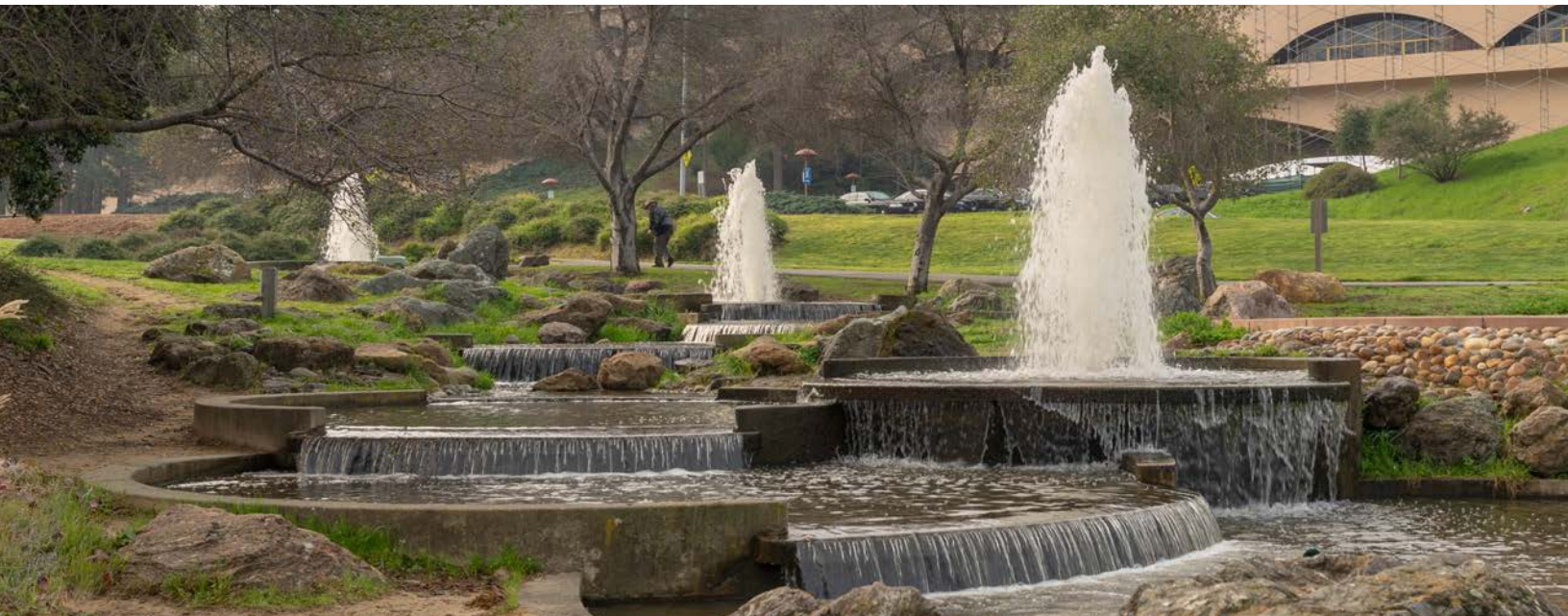


SAFEbuilt, LLC has been contracted by **Teton County, Wyoming** to provide on-call building department and planning services under a Professional Services Agreement since September 2022. Services include as-needed building inspections, plan review, and code compliance support delivered by ICC-certified personnel in accordance with adopted local and state codes. In addition, since 2022, SAFEbuilt has provided planning and zoning support for the County. The planning team conducts reviews of applications and plans for compliance with local land use regulations. This integrated approach demonstrates Teton County's commitment to high standards of safety, service, and regulatory compliance, supported by SAFEbuilt's responsive municipal expertise.



REFERENCES

NAME	CONTACT INFORMATION	MUNICIPALITY
Dawn Stephens	208.639.5341	Kuna, Idaho Building Department
Morgan Landers	208.727.5085	Ketchum, Idaho Planning & Building Department
Patrick Davidson	303.646.4166 ext. 504	Elizabeth, Colorado Town Administration Department



RESUMES



ALAN CHAMBERS, CBO

Building Official/Building Inspector

SAFEbuilt®

45 YEARS OF EXPERIENCE

4 YEARS WITH THE FIRM

LICENSES & CERTIFICATIONS

International Code Council (ICC)

#8717970

Accessibility Inspector/Plans Examiner
Building Inspector
California Commercial Building Inspector
California Commercial Electrical Inspector
California Residential Building Inspector
California Residential Combination Inspector
California Residential Electrical Inspector
California Residential Mechanical Inspector
California Residential Plumbing Inspector
Certified Building Official
Commercial Building Inspector
Commercial Electrical Inspector
Electrical Inspector
Permit Specialist
Permit Technician
Residential Building Inspector
Residential Combination Inspector
Residential Electrical Inspector
Residential Mechanical Inspector
Residential Plans Examiner
Residential Plumbing Inspector

Inspector

SAFEbuilt Contract with the City of Caldwell, ID

Building Official/Inspector

SAFEbuilt Contract with the City of Garden City, ID

Building Official/Inspector

SAFEbuilt Contract with the City of Ketchum, ID

Building Official/Inspector

SAFEbuilt Contract with the City of Kuna, ID

WORK HISTORY

Building Official

SAFEbuilt, LLC

11/2021 – Present

Building Official/Building Inspector

Charles Abbot Associates, Inc.

2017 – 2021

General Contractor, Owner

The Chambers Company

Placentia, CA

1991 – 2017

Field Superintendent

SPS Inc.

Anaheim, CA

1983 – 1991

Construction

Worthington Construction

Yorba Linda, CA

1980 – 1983

PROJECT EXPERIENCE

Inspector

SAFEbuilt Contract with the City of Carey, ID



DANIELLE MEYERS FIOCCI, AIA, NCARB, LEED AP, BO

Plans Examiner

SAFEbuilt®

22 YEARS OF EXPERIENCE

4 YEARS WITH THE FIRM

EDUCATION

MS, Architecture

University of Oregon, Portland

BS, Architecture

University of Minnesota

LICENSES & CERTIFICATIONS

International Code Council (ICC)

#8822248

Building Inspector

Building Plans Examiner

Commercial Building Inspector

Commercial Mechanical Inspector

Fire Plans Examiner

Residential Building Inspector

Residential Plans Examiner

State of Oregon

Licensed Architect, Individual #ARI-6611

CAX-Residential Plans Examiner #2553CAX

CAS-Residential Structural Inspector #2569CAS

SRI-Plan Reviewer or Inspector #278SRI

BO-Building Official #5632BO

MIA-Mechanical Inspector A-Level #5916MIA

SIA-Structural Inspector A-Level #5984SIA

PEA-Plans Examiner A-Level #6082PEA

PEF-Fire and Life Safety Plans Examiner

#6143PEF

OIC-OR Inspector Certification #OIC3590

U.S. Green Building Council

LEED Accredited Professional (AP) #10229207

National Council of Architectural Registration Boards (NCARB)

Certification #118296

American Institute of Architects (AIA)

Certification #38490371

WORK HISTORY

Plans Examiner

SAFEbuilt, LLC

2021 – Present

Building Official/Plans Examiner/Inspector

City of Hood River, OR

2019 – 2021

Code Analyst/Building Official/Plans Examiner/Inspector

Clair

Company

Hood River, OR

2017 – 2019

Owner's Representative and Discipline Lead for Civil Structural Architectural Scope + Design Manager

Intel Corporation

Hillsboro, OR

2011 – 2017

Architectural Intern

with Crazy Turnip, LLC; Portland, OR

Kahler Slater; Madison & Milwaukee, WI

Hammel, Green, Abrahamson; Minneapolis, MN

BWBR Architects; St. Paul, MN

Wold Architects and Engineers; St. Paul, MN

Rozeboom Miller Architects; Minneapolis, MN

2003 – 2011

PROJECT EXPERIENCE

Plans Examiner

SAFEbuilt Contract with the City of

Beaverton, OR

Plans Examiner

SAFEbuilt Contract with the City of Ketchum,

ID

Plans Examiner

SAFEbuilt Contract with the Town of

Superior, CO

Plans Examiner

SAFEbuilt Contract with Elbert County, CO

Plans Examiner

SAFEbuilt Contract with the City of Castle

Pines, CO

Plans Examiner

SAFEbuilt Contract with the City of Boise, ID

Plans Examiner

SAFEbuilt Contract with the City of Carey, ID

Plans Examiner

SAFEbuilt Contract with the City of Meridian,

ID



ANDREW FRAME, CBO

Plans Examiner

SAFEbuilt®

29 YEARS OF EXPERIENCE

3 YEARS WITH THE FIRM

EDUCATION

Building Trades Studies

Salina Vocational Technical College

LICENSES & CERTIFICATIONS

International Code Council (ICC)

Building Code Specialist
Building Inspector
Building Plans Examiner
Certified Building Code Official
Certified Building Official
Certified Mechanical Code Official
Certified Plumbing Code Official
Combination Inspector
Commercial Combination Inspector
Commercial Electrical Inspector
Electrical Inspector
Mechanical Code Specialist
Mechanical Inspector
Mechanical Plans Examiner
Plumbing Code Specialist
Plumbing Inspector
Plumbing Plans Examiner
Residential Combination Inspector

State of Florida

Building Code Administrator #BU2145, Building Code A
Certified General Contractor #CGC1505128
Provisional Electrical Plans Examiner #PEP555
Standard Inspector #BN2833 with Building, Commercial Electric, Residential, Mechanical, and Plumbing
Standard Plans Examiner #PX1306 with Building, Mechanical, and Plumbing

Florida Stormwater, Erosion, and Sedimentation Control Inspector Program

Qualified Stormwater Management Inspector Certificate #SMI47477

WORK HISTORY

- **Plans Examiner**
SAFEbuilt, LLC
2022 - Present
- **Inspector and Plans Examiner**
Universal Engineering Services
2020 - 2021
- **Combination Building Inspector**
City of Maitland, FL
2019 - 2020

- **President**
Famensons, Inc. General Contractor
2002 - 2019
- **Inspector/Plans Examiner**
City of Winter Springs, FL
2000 - 2009
- **Building Inspector/Plans Examiner**
City of Winter Springs, FL
1996 - 1999

PROJECT EXPERIENCE

- **Plans Examiner**
SAFEbuilt Contract with the City of Boulder, CO
- **Plans Examiner**
SAFEbuilt Contract with the City of Bozeman, MT
- **Plans Examiner**
SAFEbuilt Contract with Kitsap County, WA
- **Plans Examiner**
SAFEbuilt Contract with the Town of Superior, CO
- **Plans Examiner**
SAFEbuilt Contract with the City of Northglenn, CO
- **Plans Examiner**
SAFEbuilt Contract with Colorado State University
- **Plans Examiner**
SAFEbuilt Contract with the City of Central City, CO
- **Plans Examiner**
SAFEbuilt Contract with Spokane County, WA
- **Plans Examiner**
SAFEbuilt Contract with the City of Port Orchard, WA



ADRIAN JONES, PE

Fire Protection Engineer & Fire Plans Examiner

41 YEARS OF EXPERIENCE

7 YEARS WITH THE FIRM

SAFEbuilt®

EDUCATION

BS, Building Construction

University of Washington

AA, Civil Engineering Technology

Centralia College

AA, Fire Command and Administration

North Seattle Community College

AA, Criminal Justice

Bellevue College

LICENSES & CERTIFICATIONS

State of Washington

Professional Engineer, Civil and Fire Protection #14618

State of Oregon

Professional Engineer, Fire Protection #11072PE

WORK HISTORY

- **Fire Protection Engineer/Fire Plans Examiner**
SAFEbuilt, LLC
Bellevue, WA
2017 – Present
- **Fire Protection Engineer/Plan Reviewer**
Bellevue Fire Department
Bellevue, WA
2000 – 2016
- **Fire Protection Engineer**
Seattle Fire Department
Seattle, WA
1998 – 2000
- **Senior Account Executive**
CIGNA Special Risk Facilities
1988 – 1995
- **Western Regional Manager**
CIGNA Utility/Petrochemical Specialists
1986 – 1988
- **Senior Fire Protection Engineer**
Washington Public Power Supply System
Richland, WA
1983 – 1986
- **Loss Prevention Inspector & Large Loss Investigator**
Factory Mutual Engineering (later FM Global)
Bellevue, WA
1974 – 1982

PROJECT EXPERIENCE

- **Fire Plans Examiner**
SAFEbuilt Contract with Walla Walla County, WA
- **Fire Plans Examiner**
SAFEbuilt Contract with the City of Chelan, WA
- **Fire Plans Examiner**
SAFEbuilt Contract with the City of Port Townsend, WA
- **Fire Plans Examiner**
SAFEbuilt Contract with the Central Valley Fire District
Belgrade, MT
- **Fire Plans Examiner**
SAFEbuilt Contract with the City of Vancouver, WA
- **Fire Plans Examiner**
SAFEbuilt Contract with Spokane County, WA



RAVI MAHAJAN, CBO, PE

Structural Plans Examiner

41 YEARS OF EXPERIENCE

2 YEARS WITH THE FIRM

SAFEbuilt®

EDUCATION

MBA, Business Administration

University of Cincinnati

MS, Civil Engineering

Ohio State University

BS, Civil Engineering

University of Delhi

LICENSES & CERTIFICATIONS

International Code Council (ICC)

#5270211

Building Code Specialist

Building Inspector

Building Plans Examiner

Certified Building Code Official

Certified Building Official

Commercial Building Inspector

Commercial Mechanical Inspector

Mechanical Inspector

Residential Building Inspector

Residential Mechanical Inspector

Residential Plans Examiner

State of Washington

Professional Engineer, Civil #43941

State of Oregon

Professional Engineer, Civil Engineering,

Structural Engineering #58815PE

State of California

CAX-Residential Plans Examiner #1841CAX

CAS-Residential Structural Inspector #2150CAS

GQI-Gen Post-Earthquake Inspector #361GQI

BO-Building Official #5339BO

PEA-Plans Examiner A-Level #5412PEA

PEF-Fire and Life Safety Plans Examiner

#5414PEF

SIA-Structural Inspector A-Level #5478SIA

MIA-Mechanical Inspector A-Level #5763MIA

OIC-OR Inspector Certification #OIC3619

WORK HISTORY

Building and Structural Plans Examiner

SAFEbuilt, LLC

Bellevue, WA

2022 - Present

Plan Review (Structural) Engineer

Several Municipalities in Oregon

2007 - 2022

Facilities Engineer III

Building Codes Division (BCD)

1998 - 2007

Project Coordinator

Shiban Ganju & Associates

1997 - 1998

General Contractor

Patvaar Construction Co. Pvt. Ltd.

1990 - 1997

Plan Review Engineer/Chief Engineer

City of Cleveland, OH

1985 - 1990

General Contractor

Cincinnati United Contractors

1983 - 1985

PROJECT EXPERIENCE

Structural Plans Examiner

SAFEbuilt Contract with the Town of

Severance, CO

Structural Plans Examiner

SAFEbuilt Contract with the City of

Bozeman, MT

Structural Plans Examiner

SAFEbuilt Contract with Kitsap County, WA

Structural Plans Examiner

SAFEbuilt Contract with the Town of

Lochbuie, CO

Structural Plans Examiner

SAFEbuilt Contract with the City of Black

Hawk, CO

Structural Plans Examiner

SAFEbuilt Contract with the City of

Arlington, WA

Structural Plans Examiner

SAFEbuilt Contract with the City of Meridian,

ID

Structural Plans Examiner

SAFEbuilt Contract with the City of

Northglenn, CO

Structural Plans Examiner

SAFEbuilt Contract with the City of Spokane,

WA

Structural Plans Examiner

SAFEbuilt Contract with the City of Port

Townsend, WA

Structural Plans Examiner

SAFEbuilt Contract with the Town of Pierce,

CO

Structural Plans Examiner

SAFEbuilt Contract with the City of Boulder,

CO

Structural Plans Examiner

SAFEbuilt Contract with the Town of Cicero,

IL

Structural Plans Examiner

SAFEbuilt Contract with the Town of

Carbondale, CO

Structural Plans Examiner

SAFEbuilt Contract with the Town of Estes

Park, CO

Structural Plans Examiner

SAFEbuilt Contract with the City of Laramie,

WY

Structural Plans Examiner

SAFEbuilt Contract with the City of Phoenix,

AZ

Structural Plans Examiner

SAFEbuilt Contract with the City of Tucson,

AZ

Structural Plans Examiner

SAFEbuilt Contract with Walla Walla County,

WA

Structural Plans Examiner

SAFEbuilt Contract with the City of

Mountlake Terrace, WA

Structural Plans Examiner

SAFEbuilt Contract with the City of Kuna, ID

Structural Plans Examiner

SAFEbuilt Contract with the City of Boise, ID

Structural Plans Examiner

SAFEbuilt Contract with the City of Decatur,

GA

Structural Plans Examiner

SAFEbuilt Contract with the City of Evans, CO

Structural Plans Examiner

SAFEbuilt Contract with the City of Timnath,

CO

Structural Plans Examiner

SAFEbuilt Contract with the Town of

Superior, CO



MARK WESTOVER, PE

Structural Plans Examiner

38 YEARS OF EXPERIENCE

4 YEARS WITH THE FIRM

SAFEbuilt®

EDUCATION

MS, Environmental Engineering

National University

BS, Civil Engineering

University of Nevada

BS, Geology

University of Washington

LICENSES & CERTIFICATIONS

State of Washington

Professional Civil Engineer #49138

Certified Erosion & Sediment Control Lead Certificate #70763

State of California

Professional Civil Engineer #54725

WORK HISTORY

- **Engineer/Plans Examiner**
SAFEbuilt, LLC
Bellevue, WA
2021 – Present
- **Engineering Project Manager, Capital Projects**
City of Bainbridge Island, WA
2016 – 2017
- **Resident Engineer/Stormwater Engineer/Transportation Engineer, Construction**
California State Highway Department (CALTRANS)
Marysville, CA
2012 – 2015
- **Associate Engineer, Land Development**
City of Moreno Valley, CA
2008 – 2011
- **Associate Engineer, Land Development**
City of Poway, CA
2004 – 2008
- **Associate Engineer, Public Works**
City of Seaside, CA
2004
- **Senior Engineer, Public Works**
City of Novato, CA
2000 – 2024
- **Resident Engineer/Office Engineer/Transportation Engineer**
California State Highway Department (CALTRANS)
1987 – 2000

PROJECT EXPERIENCE

- **Structural Plans Examiner**
SAFEbuilt Contract with the City of Arlington, WA
- **Structural Plans Examiner**
SAFEbuilt Contract with Walla Walla County, WA
- **Structural Plans Examiner**
SAFEbuilt Contract with King County, WA
- **Structural Plans Examiner**
SAFEbuilt Contract with Kitsap County, WA
- **Structural Plans Examiner**
SAFEbuilt Contract with the City of Sequim, WA
- **Structural Plans Examiner**
SAFEbuilt Contract with the City of Mulkiteo, WA