

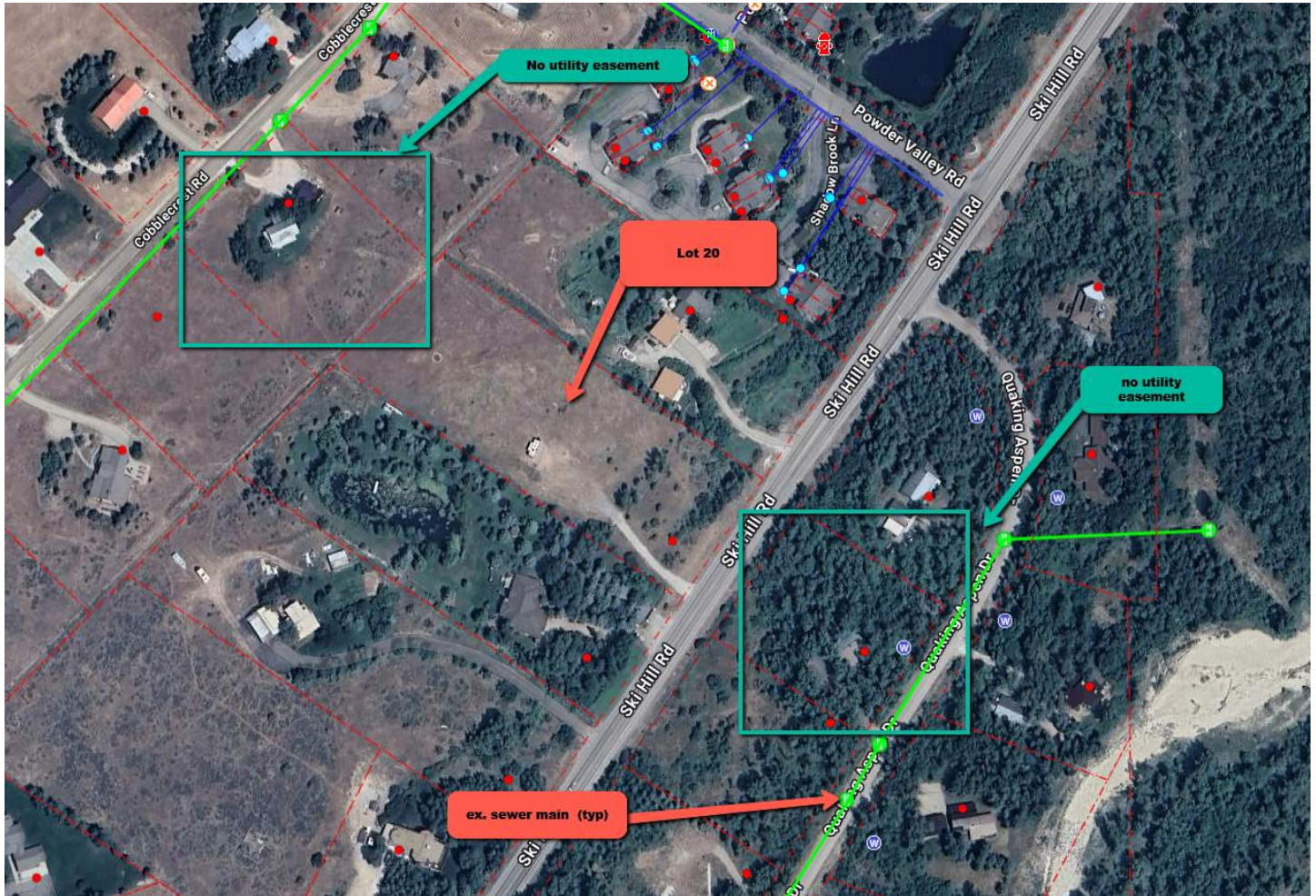
## Aspen Meadows Lot Sewer

jmaz@driggsidaho.org <jmaz@driggsidaho.org>  
To: Nick Mestre <nickmestre22@gmail.com>

Tue, Dec 17, 2024 at 8:47 AM

Nick,

I reviewed the location of Lot 20 and the subject lot does not have access to an existing sewer main. The closest available access (through utility easements or public ROW) is more than 1000 feet away.



JAY T. MAZALEWSKI, PE

PUBLIC WORKS DIRECTOR, CITY ENGINEER

208-354-2362 ext. 2115

[jmaz@driggsidaho.org](mailto:jmaz@driggsidaho.org)

[www.driggsidaho.org](http://www.driggsidaho.org)

60 S. Main St. | PO Box 48 | Driggs, ID 83422

All communications are subject to Idaho Open Records Law and City of Driggs Communications Policies.